

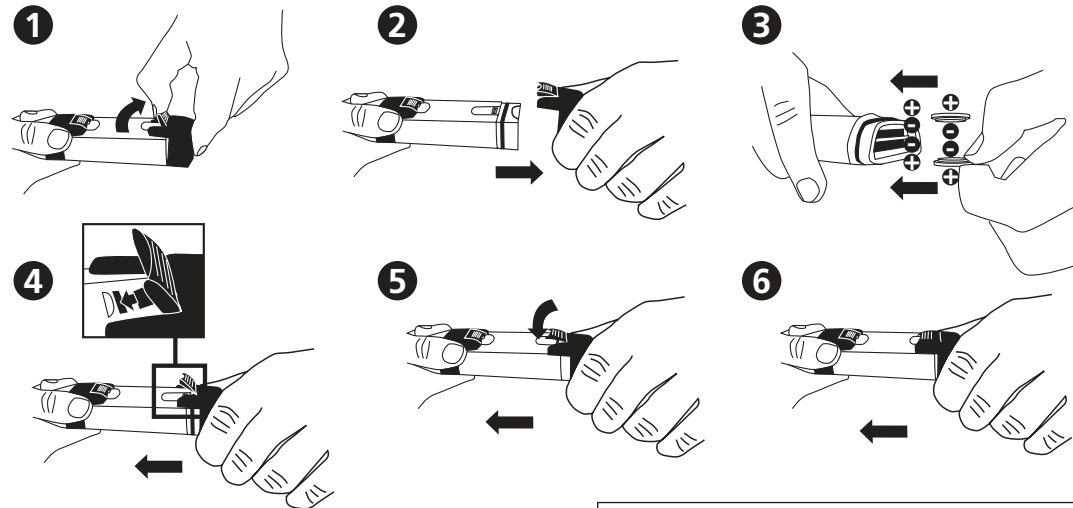


# SD 90

Salt

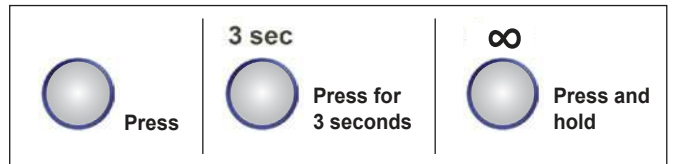
GB

## Insert the batteries

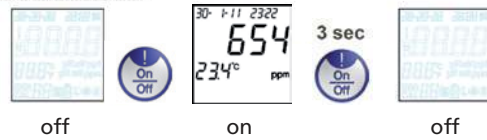


## MEASUREMENT

Remove protective cap from the probe

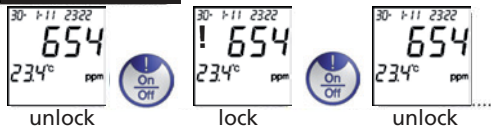


### A. Power ON/OFF



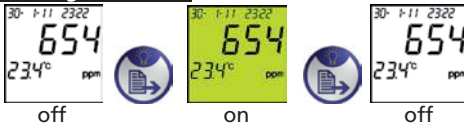
Automatically turns off after 8 minutes of inactivity.

### B. Lock/Unlock Data

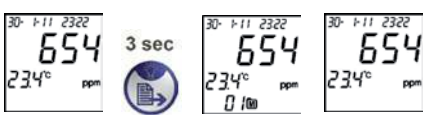


Possible slight delay after pressing before freeze of the data (!).

### C. Backlight ON/OFF



### D. Store Data



After 3 sec. the file no. temporarily appears on the display, e.g. 01. Once the storage has reached max. capacity, the data will overwrite the oldest files.

## Salt CALIBRATION

Characters in **RED** represent „Flashing symbols“.

- Re-Calibrate according to individual recommendations! Rinse the electrode with distilled water after each measurement.
- If temperature is out of range, „ERR“ will appear. Meter automatically returns to Measurement Mode.
- If the default reading is more than 30% out of standard buffer range, „ERR“ will appear.

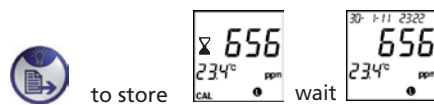
### E. Calibrate Salt

Remove protective cap from the probe.  
Power ON (see A)

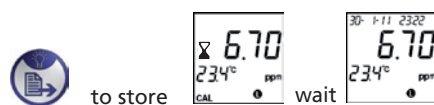
Auto-recognition for ① : 100~1000 ppm and ② : 1.00~20.00 ppt



Adjustment: to increase (+): + to decrease (-):



Adjustment: to increase (+): + To decrease (-)



# SETUP

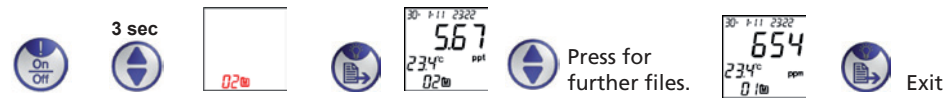
## F. System Setup

Characters in **RED** represent „Flashing symbols“.

Unfreeze data first (see frontside B) before Menu selection.

- 3 sec Recall Data go to I.
- 1x Select Unit go to II.
- 2x Set Date and Time go to III.
- 3x Set Temperature go to IV.
- 4x Set Data/Time display type go to V.
- To enter.

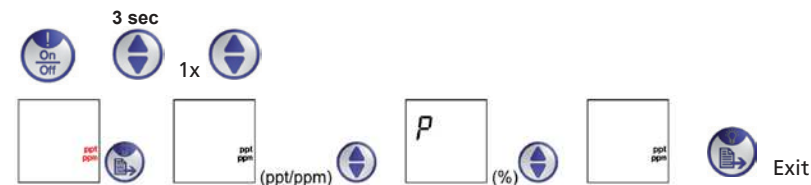
### I. Recall Data



### Delete stored data.



### II. Select Unit (% or ppt/ppm)



### III. Set Date and Time

Select V. 'Set Data/ Time display type' first.



Adjustment: to increase (+); to decrease (-)

### IV. Set Temperature system (°C/°F)



### V. Set Data/Time display type



### Error Code and Actions

Description	Range	Actions
1 Electrode not installed or bad	Thermistor: 0.5~100k Ω	Install or replace electrode
2 Not used		
3 Temperature out of range	0~60°C	Bring solution to the temperature within range
4 Not used		
5 Calibrated value out of range	70 %-130 % (compare to the default value)	Re-calibrate or replace the electrode or use the default value (remove batteries)
6 Salt out of range	<20.00ppt (2.00%)	Use other solution

### SD 90 Salt Specifications/Features

- 1 Operating range: 0~60°C, <20.00ppt(2.00%)
- 2 Automatic switch over ppm and ppt. ppm:0~999ppm; ppt:1.00~20.00ppt (when set to ppt/ppm unit)
- 3 Up to 2 points manual mode calibration, +/-50% adjustable value
- 4 Salt resolution: 0.01% (when set to „P“% unit); Accuracy: ±3%FS
- 5 Salt resolution: 1ppm(<=999ppm) and 0.01ppt(1.00~20.00ppt) (when set to ppt/ppm unit); Accuracy: ±3%FS
- 6 Temperature resolution: 0.1°C; Accuracy: ±1°C. Selectable °C/°F system
- 7 Selectable unit system („P“% or ppt/ppm)
- 8 Time and date display/stamp with 25 sets of data storage (non-volatile)
- 9 22x22mm LCD screen, with Yellow Green backlight
- 10 2x CR2032 batteries
- 11 Auto-power off to save battery (8 minutes non-use)

### Content

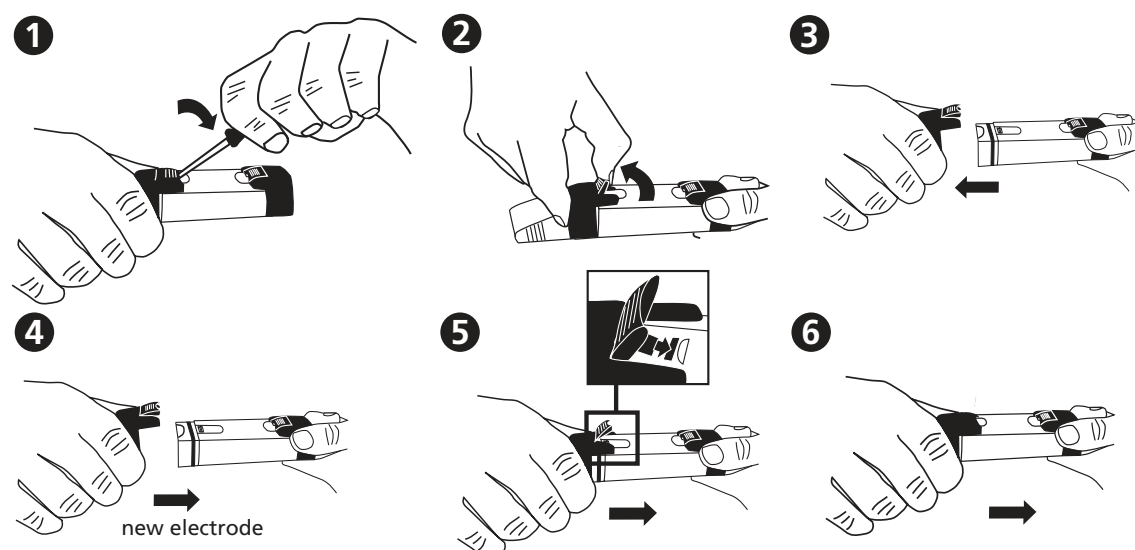
- 1 Salt Meter SD 90 in a robust plastic case with strap
- 2 Batteries
- 1 Instruction Manual

Code: 19 48 04

### Accessories

- 195 00 17 Battery CR 2032 (2 Batteries required)
- 19 48 22 Replacement electrode
- 38 48 01 Beaker, 100 ml

### VI. Electrode Replacement



Instruction manuals available in further languages, visit [www.lovibond.com](http://www.lovibond.com)