

welldana[®]



pool spa sauna wellness

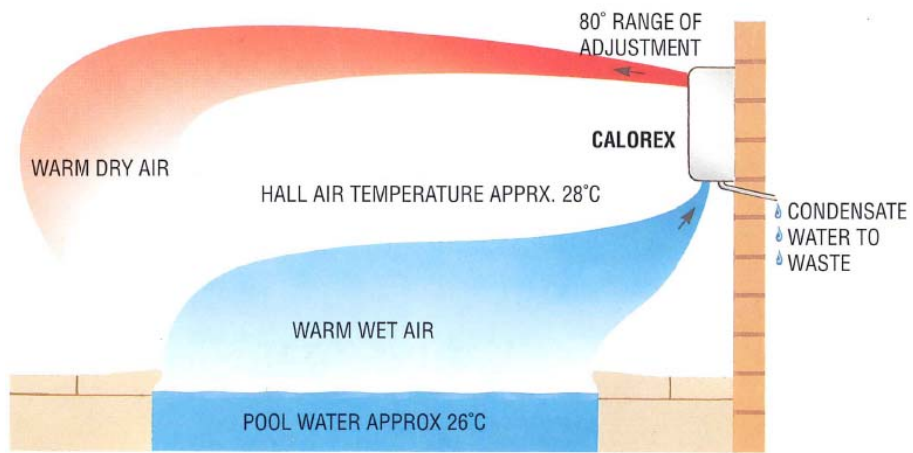
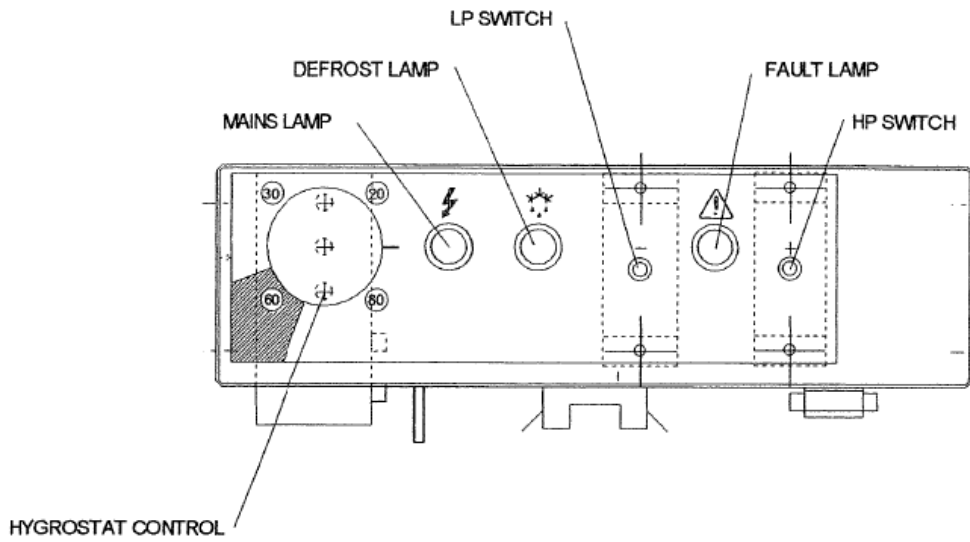
Welldana A/S
Randersvej 6 · DK-6700 Esbjerg
Phone +45 75 27 23 33
Fax +45 75 27 21 11
E-mail: info@welldana.com
www.welldana.com

**Calorex affugter. Vægmodel.
Med indbygget styring og hygrostat.
Model 34-183310. 30L/døgn
Model 34-185540. 60L/døgn**

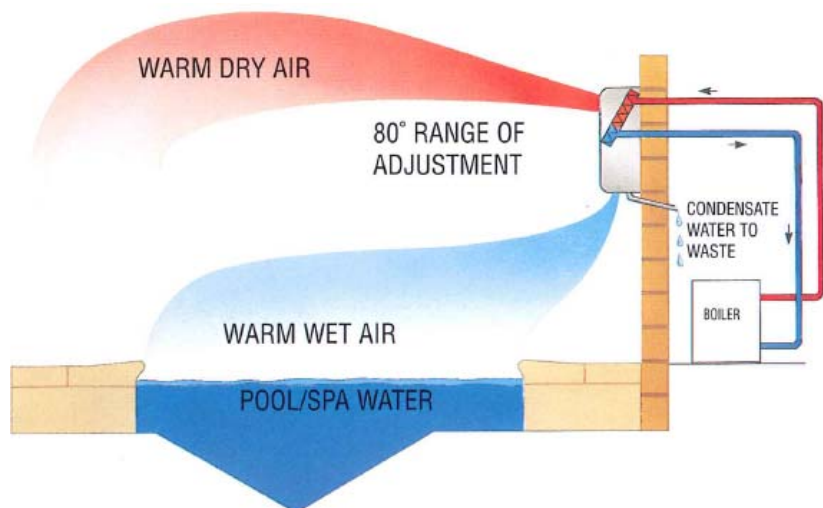


11-01-2011.

Panel.



Standard opstilling.



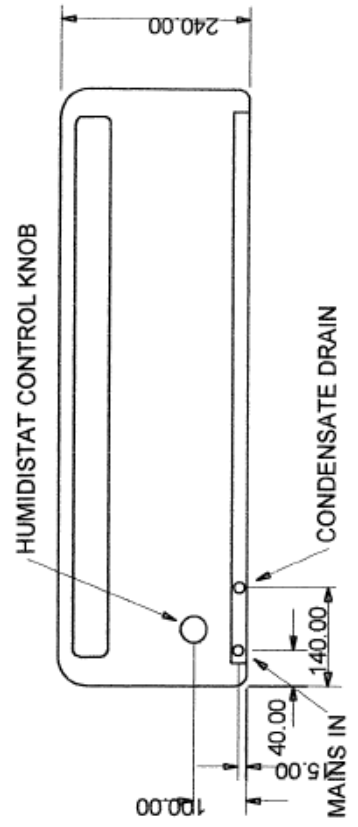
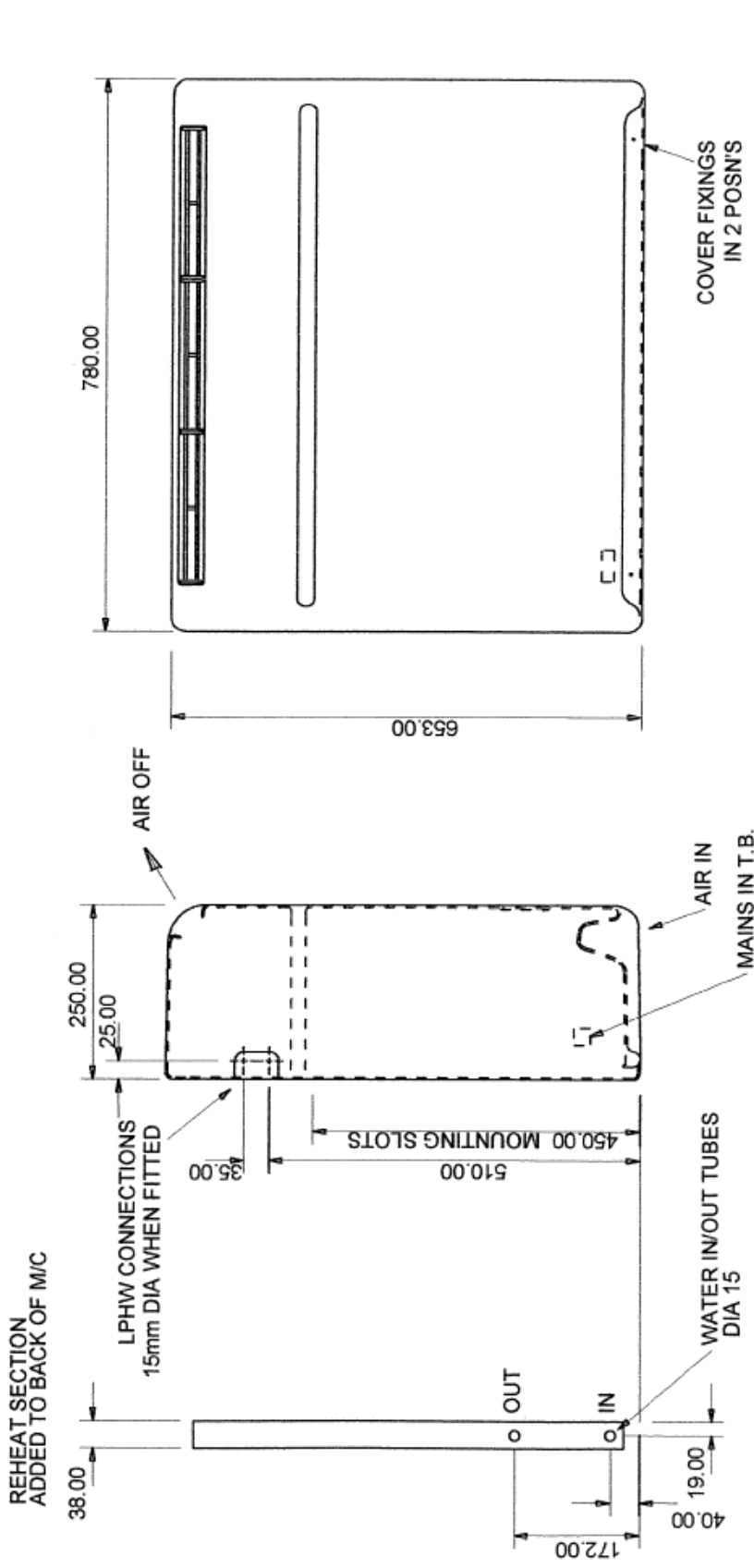
Her vist med LPHW (varmeveksler) funktion. (Ekstra udstyr)

Teknisk data.

MODEL	DH30A	DH30AX	DH30AP/AXP	DH30ARH	DH50/60A	DH50/60AX	DH50/60AP/AXP	DH50/60ARH
DEHUMIDIFICATION	L/hr 1.25	L/hr 1.25	L/hr 1.25	L/hr 1.25	L/hr 2.5	L/hr 2.5	L/hr 2.5	L/hr 2.5
TOTAL HEAT TO AIR :-	L/day 30.0	L/day 30.0	L/day 30.0	L/day 30.0	L/day 60.0	L/day 60.0	L/day 60.0	L/day 60.0
DEHUMIDIFIER ONLY .	KW 1.9	KW 1.9	KW 1.9	KW 0.5	KW 3.5	KW 3.5	KW 3.5	KW 0.65
DEHUM & RESISTANCE HEATER .	KW n/a	KW n/a	KW 2.09	KW n/a	KW n/a	KW n/a	KW 5.55	KW n/a
RESISTANCE HEATER ONLY .	KW n/a	KW n/a	KW 2.0	KW n/a	KW n/a	KW n/a	KW 4.0	KW n/a
TOTAL HEAT TO WATER .	KW n/a	KW n/a	KW n/a	KW 1.4	KW n/a	KW n/a	KW n/a	KW 2.8
NOMINAL POWER CONSUMED:-								
FAN ONLY .	KW 0.05	KW 0.05	KW 0.05	KW 0.05	KW 0.11	KW 0.11	KW 0.11	KW 0.11
DEHUM (COMP & FAN) .	KW 0.75	KW 0.75	KW 0.75	KW 0.75	KW 1.2	KW 1.2	KW 1.2	KW 1.2
DEHUM & HEATER .	KW n/a	KW n/a	KW 2.75	KW n/a	KW n/a	KW n/a	KW 5.2	KW n/a
HEATER & FAN .	KW n/a	KW n/a	KW 2.05	KW n/a	KW n/a	KW n/a	KW 4.11	KW n/a
SUPPLY	230v50hz	230v50hz	230v50hz	230v50hz	230v50hz	230v50hz	230v50hz	230v50hz
FUSE	AMP 10.0	AMP 10.0	AMP 20.0	AMP 10.0	AMP 13.0	AMP 13.0	AMP 32.0	AMP 13.0
NOMINAL RUNNING AMPS	AMP 3.4	AMP 3.4	AMP 11.7	AMP 3.4	AMP 5.6	AMP 5.6	AMP 22.3	AMP 5.6
FULL LOAD AMPS	AMP 4.4	AMP 4.4	AMP 12.7	AMP 4.4	AMP 7.5	AMP 7.5	AMP 24.2	AMP 7.5
COMPRESSOR L.R.A.	AMP 15.3	AMP 15.8	AMP 15.8	AMP 15.8	AMP 30.0	AMP 30.0	AMP 30.0	AMP 30.0
AIR FLOW	m ³ /h 700	m ³ /h 700	m ³ /h 700	m ³ /h 700	m ³ /h 1280	m ³ /h 1280	m ³ /h 1280	m ³ /h 1280
NOISE LEVEL @ 3m	dB(A) 52	dB(A) 52	dB(A) 52	dB(A) 52	dB(A) 54	dB(A) 54	dB(A) 54	dB(A) 54
WATERFLOW RATE	L/min n/a	L/min n/a	L/min n/a	L/min 10	L/min n/a	L/min n/a	L/min n/a	L/min 14
PRESSURE DROP	m hd n/a	m hd n/a	m hd n/a	m hd 1.6	m hd n/a	m hd n/a	m hd n/a	m hd 1.5
REFRIGERANT CHARGE	Kg R22 0.57	Kg R22 0.45	Kg R22 0.57 AP 0.45 AXP	Kg R22 1.04	Kg R22 0.76	Kg R22 0.76	Kg R22 0.76	Kg R22 1.64
WEIGHT (UNPACKED/PACKED)	Kg 40 / 50	Kg 40 / 50	Kg 40 / 50	Kg 45 / 55	Kg 60 / 75	Kg 60 / 75	Kg 60 / 75	Kg 65 / 80

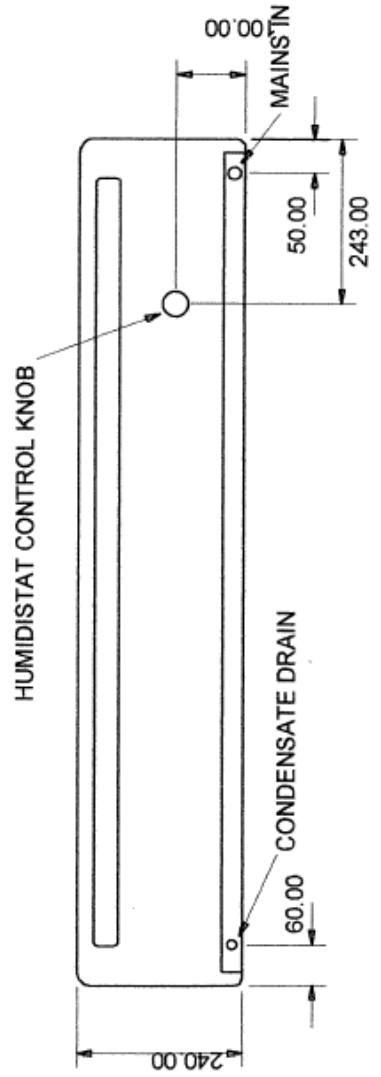
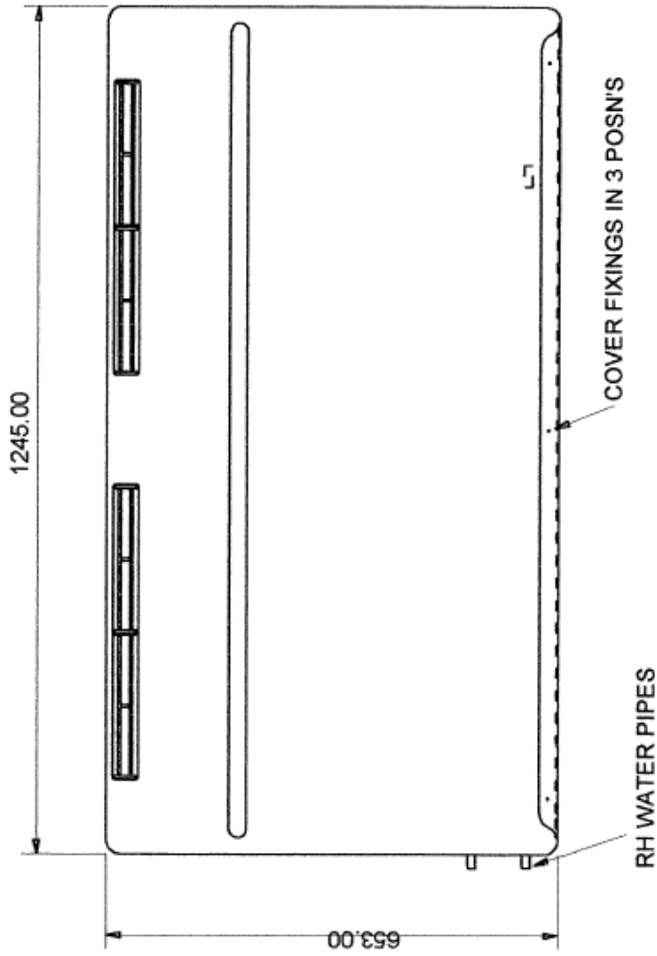
LPHW er ekstra udstyr. Varmevæksler er indbygget i affugteren fra fabrikken.
Varmevæksler kan ikke eftermonteres.

DH33 DIMENSIONS

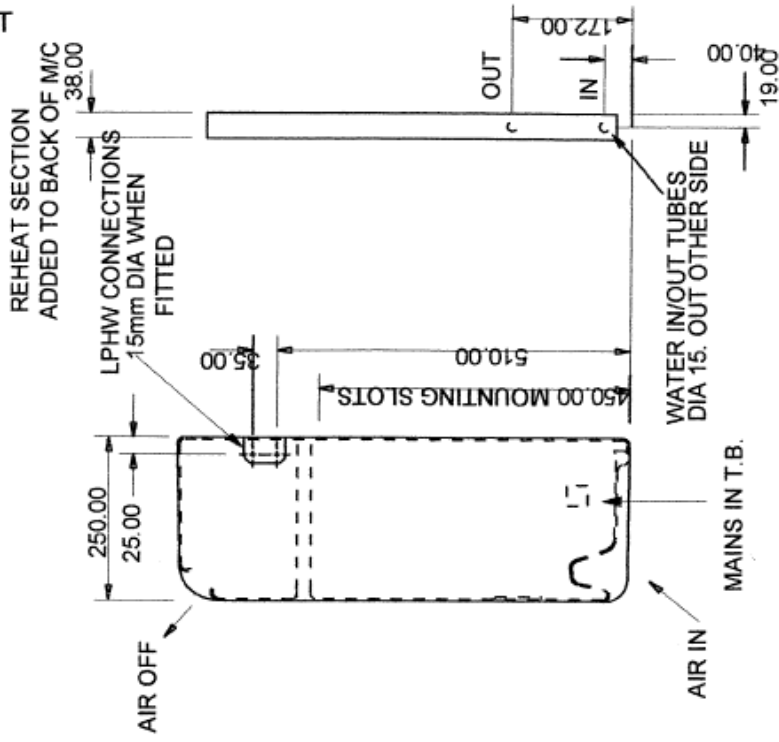


PACKED DIMENSIONS
860.00L x 330.00W x 850.00H

DH55 DIMENSIONS

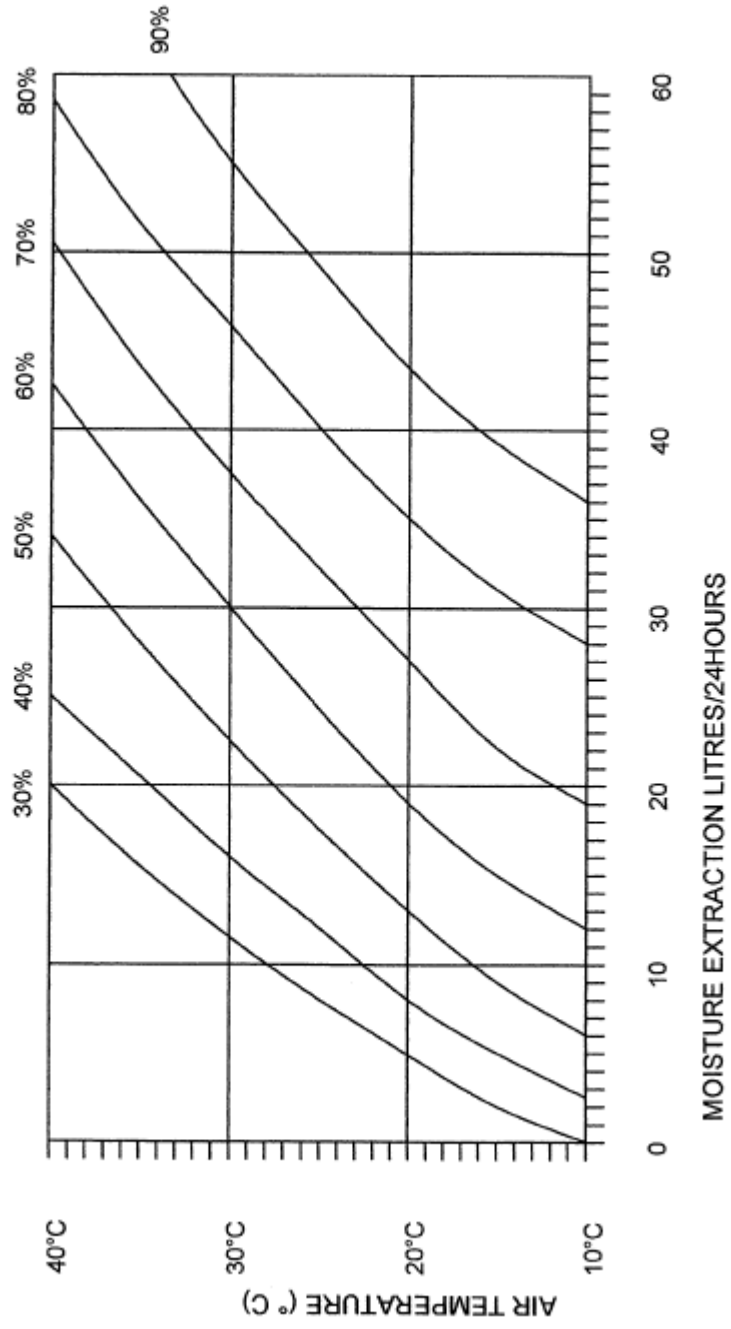


4. CONT



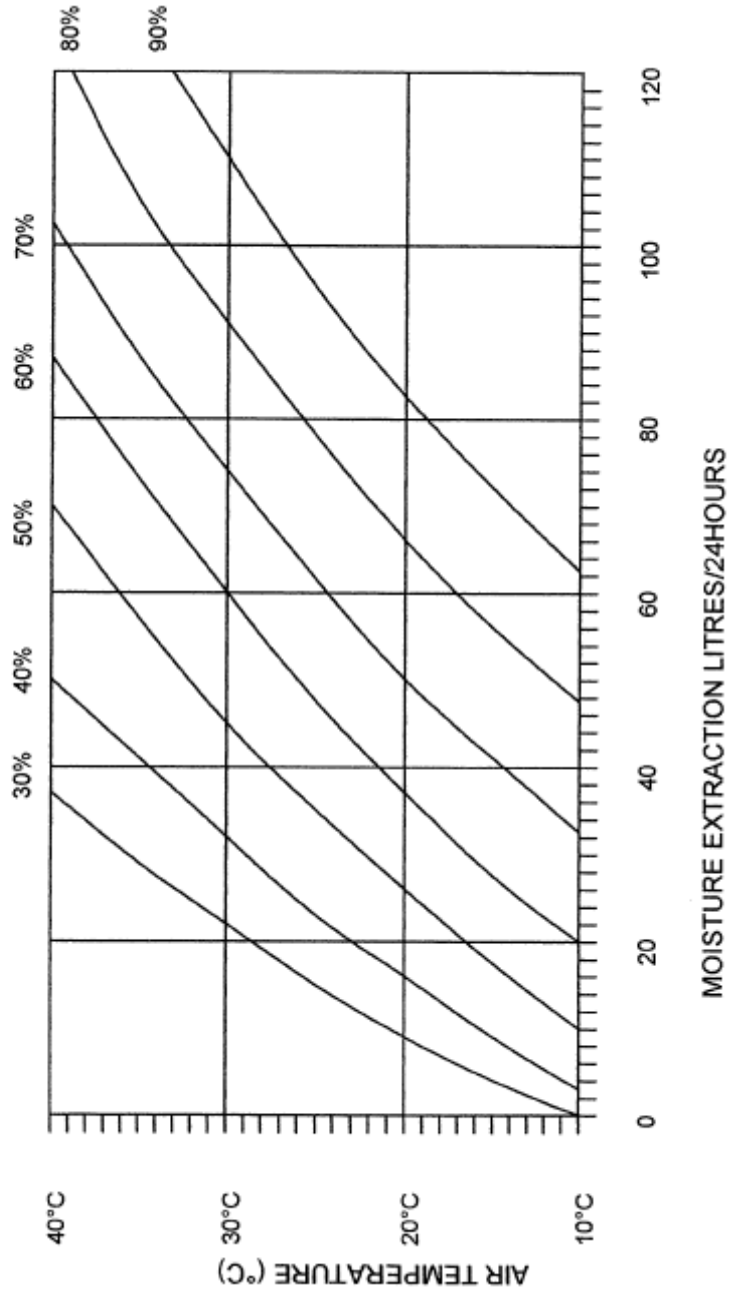
PACKED DIMENSIONS
1310.00L x 330.00W x 850.00H

DH30/30(7)/33/33(7) PERFORMANCE.



MAX OPERATING TEMP 40°C (R22 GAS)
MAX OPERATING TEMP 35°C (R407c GAS)

DH50/50(7)/55/55(7)/60/60(7) PERFORMANCE.



MAX OPERATING TEMP' 40°C (R22 GAS)
MAX OPERATING TEMP' 35°C (R407c GAS)

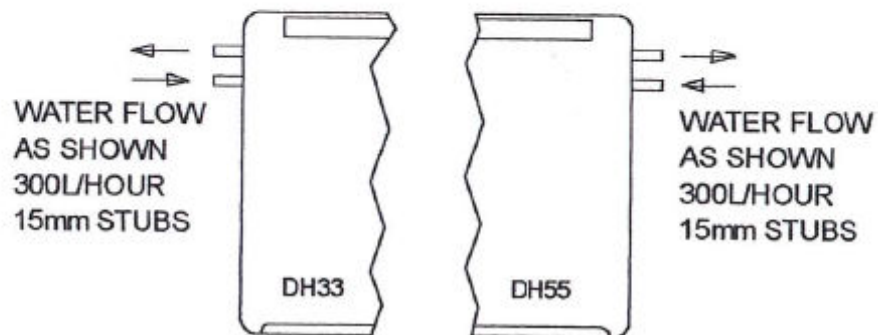
MODELS WITH L.P.H.W. FITTED

Connect water circuit piping to 15mm stubs projecting from side of machine as per diagram below:-

It is recommended that isolating valves are fitted to enable isolation of the machine in the event of service.

Complete water circuit as per diagrams overleaf.

(a) Circulating pump must be sized to take into account the design flow rate of the machine plus the water system resistance.



LPHW er ekstra udstyr. Varmveksler er indbygget i affugteren fra fabrikken.
Rørene hertil ses her på siden af affugteren.
Varmveksler kan ikke eftermonteres.

Forhandler.