

Beck.

The factory-set pressure switches.



Pressure switch 901

with factory-set pressure setting

Application

Factory-set pressure switch monitoring overpressure, vacuum or differential pressure of liquid and gaseous – also aggressive – media.

Pressure setting and switching differential are factory-set by the manufacturer.

Temperature range

Ambient temperature from -20°C to 85°C .
Temperature of media up to 85°C or 130°C depending on material of pressure connection and diaphragm.

Diaphragm material

Depending on media NBR, Silicone, FKM (Viton®), EPDM.
For 901.30 Silicone, others upon request.

Electrical rating

Values indicated for resistive load

AgNi-contacts: 6 (1.5) A/250 VAC
2 A/24 VDC

Gold-plated contacts: 100 mA/24 VAC
30 mA/24 VDC

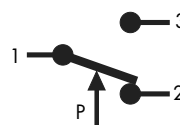
AgNi-contacts up to 10 A/250 VAC can be supplied upon request.

Electrical connection

AMP connection 6.3 mm x 0.8 mm DIN 46244.

Arrangement of contacts

for 901.1x, 901.30,
901.41, 901.51



only for 901.2x



CE Conformity

each depending on technical specification: Low Voltage Directive 2006/95/EC; RoHS Directive 2011/65/EC; ATEX Directive 94/9/EC; Product types tested by TUV.

Life

Minimum 10^6 cycles.

Damping

Restrictors alternatively with 0.3/0.5/0.8 mm diameter.

Accessories

Various mounting brackets and protection caps with IP 44, IP 54 and IP 65.

Mounting position

Mounting in any position, to be specified for settings below 100 mbar.

Pressure connection

| Type | Tube connection | | | Threaded connection | | | |
|--------|-----------------|---------|---------|--------------------------------------|--------------------------------------|----------------------------------|--------|
| | 5.0 mm | 6.5 mm | 10.0 mm | M10 x1 | G1/8 | G1/4 | G1/2 |
| 901.1x | PA | PA, PPS | PA, PPS | PA, PVDF CuZn40, V ₂ A | PA, PVDF CuZn40, V ₂ A | PVDF CuZn40, V ₂ A | CuZn40 |
| 901.2x | PA | PA, PPS | PA, PPS | PA, PVDF CuZn40, V ₂ A | PA, PVDF CuZn40, V ₂ A | CuZn40, V ₂ A | CuZn40 |
| 901.30 | | PA | | | | | |
| 901.41 | | PA, PPS | PA, PPS | PA, PVDF CuZn40, V ₂ A | PA, PVDF CuZn40, V ₂ A | CuZn40, V ₂ A | CuZn40 |
| 901.51 | | | | CuZn40 | CuZn40, V ₂ A | CuZn40, V ₂ A | |

PA = polyamide, PVDF = polyvinylidene fluoride, PPS = polyphenylsulfide, CuZn40 = brass, V₂A = stainless steel

For temperature above 85°C metal or PPS pressure connection is required. Upon request pressure connections of other sizes, other plastics or brass nickel-plated are available.

Viton® is a registered trademark of DuPont Dow Elastomers.



Overpressure range

| Type | Factory-set trip pressure | | Standard switching differential | | Tolerance band in % of trip pressure | Maximum positive working pressure standard/ extended | Maximum negative working pressure standard/ extended |
|--------|---------------------------|------------|---------------------------------|--------------------|--------------------------------------|--|--|
| | between | and | lower end of range | upper end of range | | | |
| 901.1x | 5 mbar | 200 mbar | 2.5 mbar | 50 mbar | ±10 % | 0.5/4 bar | -/-1 bar |
| | 200 mbar | 1.000 mbar | 50 mbar | 150 mbar | ±10 % | 1/4 bar | -/-1 bar |
| 901.41 | 500 mbar | 3.000 mbar | 200 mbar | 600 mbar | ±10 % | 10 bar | -1 bar |
| 901.51 | 1.0 bar | 12 bar | 0.2 bar | 1.5 bar | ±10 % | 25 bar | -1 bar |

Vacuum range

| Type | Factory-set trip pressure | | Standard switching differential | | Tolerance band in % of trip pressure | Maximum positive working pressure standard/ extended | Maximum negative working pressure standard/ extended |
|--------|---------------------------|------------|---------------------------------|--------------------|--------------------------------------|--|--|
| | between | and | lower end of range | upper end of range | | | |
| 901.2x | - 5 mbar | - 200 mbar | 2.5 mbar | 50 mbar | ±10 % | 0.5/4 bar | -1 bar |
| | - 200 mbar | - 900 mbar | 50 mbar | 150 mbar | ±10 % | 1/4 bar | -1 bar |

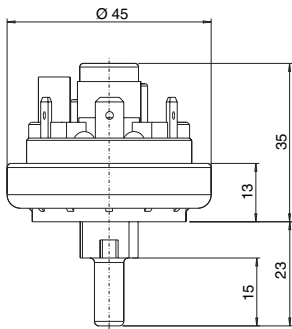
Differential pressure range

| Type | Factory-set trip pressure | | Standard switching differential | | Tolerance band in % of trip pressure | Maximum positive working pressure standard/ extended | Maximum negative working pressure standard/ extended |
|--------|---------------------------|---------|---------------------------------|--------------------|--------------------------------------|--|--|
| | between | and | lower end of range | upper end of range | | | |
| 901.30 | 5 mbar | 50 mbar | 2.5 mbar | 25 mbar | ±10 % | 100 mbar | -100 mbar |

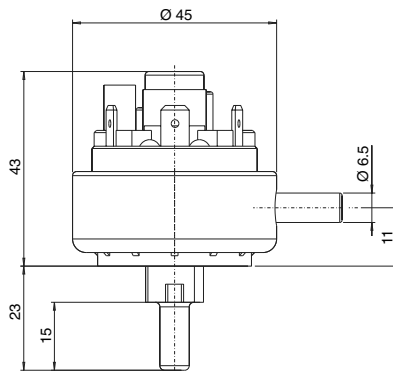
Pressure switch 901

with factory-set pressure setting

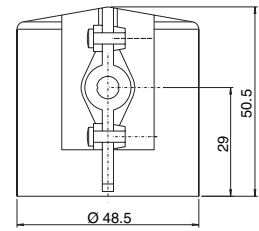
901.10/20



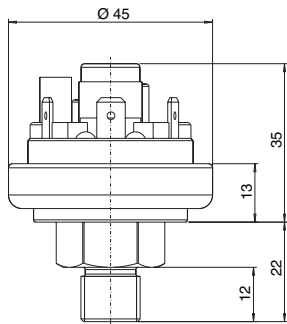
901.30



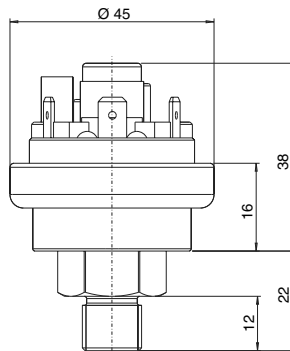
**Protection caps
6329 IP 44**



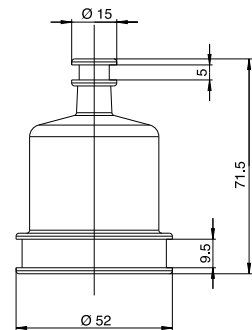
901.11/21/41



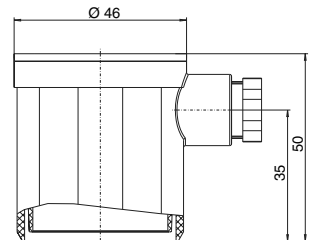
901.51



6345 IP 54



6371 IP 54 / 6372 IP 65

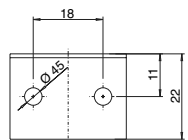
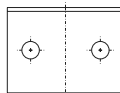
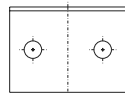
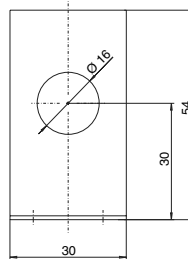
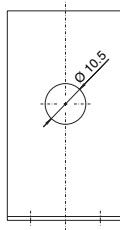
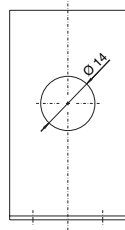
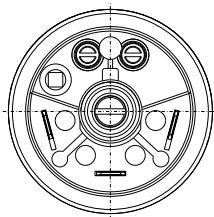


Mounting brackets

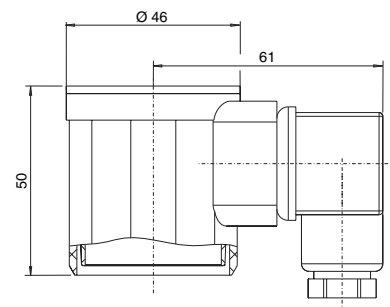
6403

6404

6405



6374 IP 54 / 6375 IP 65



Beck GmbH
Druckkontrolltechnik
P.O. Box 11 31
D-71140 Steinbronn
Telephone +49 (71 57) 52 87-0
Telefax +49 (71 57) 52 87-83
e-mail sales@beck-sensors.com
http://www.beck-sensors.com