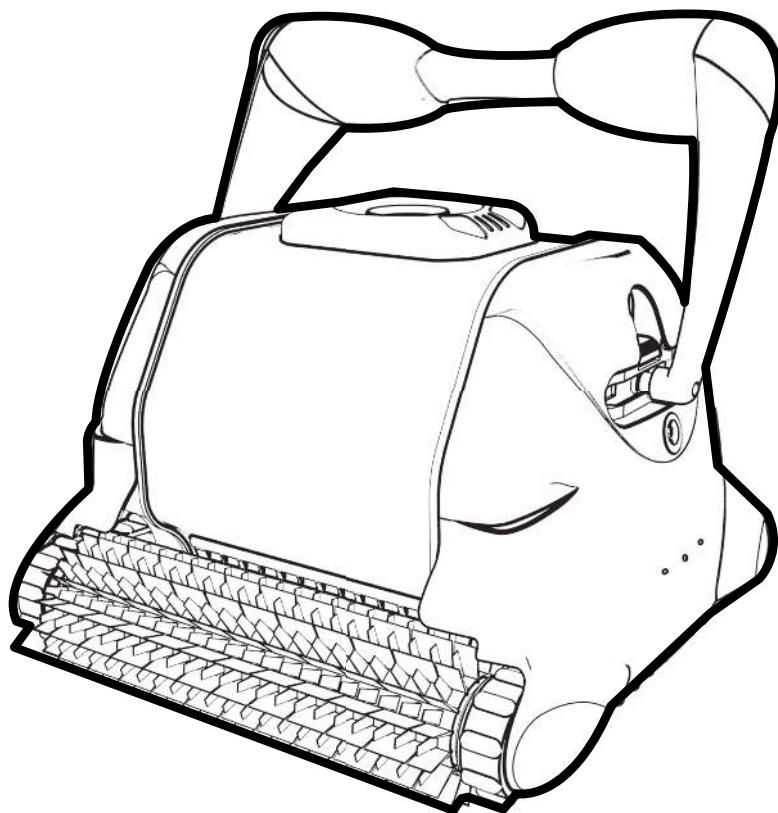
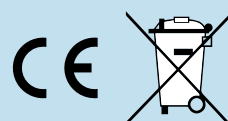


Aquashark® Series

»»» Robotic Cleaner

**Hayward Pool Products**620 Division Street
Elizabeth, NJ 07207www.hayward.com**Hayward Pool Products Canada**2880 Plymouth Drive
Oakville, ON L6H 5R4www.haywardpool.ca**Hayward Pool Europe**1070 Allée des Chênes
01150 St-Vulbas, Francewww.hayward.fr**Hayward Pool Products (Australia) Pty Ltd.**Melbourne-Sydney-Brisbane-Perth
P.O Box 4384, Dandenong South VIC. 3164www.hayward-pool.com.auwww.hayward-pool.com

IMPORTANT SAFETY INSTRUCTIONS

When installing and using this electrical equipment, basic safety precautions should always be observed including the following. Failure to adhere to the safety warnings below may result in severe injury, death or property damage.



READ AND FOLLOW ALL INSTRUCTIONS



This is the **safety-alert symbol**. When you see this symbol on your equipment or in this manual, look for one of the following signal words and be alert to the potential for personal injury.

WARNING warns about hazards that could cause serious personal injury, death or major property damage and, if ignored, presents a potential hazard.

CAUTION warns about hazards that will or can cause minor or moderate personal injury and/or property damage and, if ignored, presents a potential hazard. It also makes consumers aware of actions that are unpredictable and unsafe.

WARNING - RISK OF INJURY

- Closely supervise children and pets at all times to ensure they do not play with the cleaner – it is not a toy.
- Ensure that children do not attempt to access the cleaner while it is operating.
- This appliance is not intended for use by persons with reduced physical, sensory or mental capabilities, or lack of experience and knowledge, unless they have been given supervision or instruction concerning use of the appliance by a person responsible for their safety.
DO NOT PERMIT CHILDREN TO USE THIS PRODUCT.
- NEVER swim with the cleaner in the pool.
- Always disconnect and completely remove the cleaner before entering the pool.

WARNING - RISK OF ELECTRICAL SHOCK

- All electrical wiring MUST be in conformance with applicable local codes and regulations (See table at end of document). Always follow local code requirements. Hazardous voltage can shock, burn, and cause death or serious property damage.
- The cleaner should only be used with the provided cleaner control unit, which supplies only **Safety Extra Level Low Voltage (SELLV)** to the cleaner.
- The cleaner control unit shall be located at least 3.5 m (11.5 ft.) from the closest edge of the pool.
- To reduce the risk of electric shock, **DO NOT USE AN EXTENSION CORD** to connect control unit to electrical outlet. This could create a safety hazard and/or damage to the cleaner. Provide a properly located electrical outlet per local building codes.

WARNING - RISK OF ELECTRICAL SHOCK

- Disconnect the cleaner control unit from the electrical outlet before carrying out any user maintenance. Before working on any equipment, disconnect control unit from the equipment.
- Do not bury cable. Do not operate the cleaner with a damaged cable. If the control unit power cord is damaged, it must be replaced by the manufacturer, service agent, or similarly qualified persons in order to avoid a hazard.
- In the **United States and Canada**, the cleaner control unit must be connected only to a supply circuit protected by a ground-fault circuit-interrupter (GFCI). Contact a qualified electrician if you cannot verify that the circuit is protected by a GFCI. This GFCI should be tested on a routine basis. To test the GFCI, push the test button. The GFCI should interrupt power. Push reset button. Power should be restored. If the GFCI fails to operate in this manner, the GFCI is defective. If the GFCI interrupts power to the cleaner control unit without the test button being pushed, a ground current is flowing, indicating the possibility of an electrical shock. Do not use the cleaner control unit. Disconnect the cleaner control unit and contact the manufacturer for assistance.
- In **Europe, Australia and New Zealand**, the cleaner control unit must be supplied through a residual current device (RCD) having a rated residual operating current not exceeding 30 mA. Contact a qualified electrician if you cannot verify that the circuit is protected by a RCD.
- Never allow the plug to enter the water.

SAVE THESE INSTRUCTIONS



OPERATION INSTRUCTIONS AND IMPORTANT INFORMATION

READ BEFORE USING THE CLEANER

- Do not operate outside the pool. This will damage the motor seal and void the warranty.
- Do not drag the cleaner out of the pool against the side wall. This could damage the cleaner and/or the pool wall.

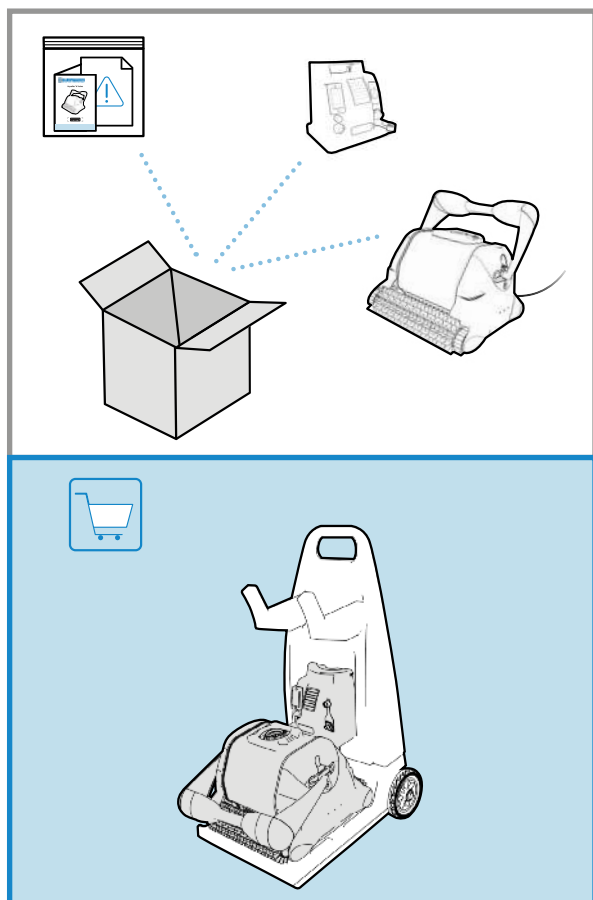
CAUTION - RISK OF EQUIPMENT DAMAGE

- Only operate the cleaner for the period of time necessary to clean the pool. Excessive use is unnecessary and will cause cleaner parts to prematurely wear.
- Regularly inspect the cleaner, cables and control unit. Do not use if damaged or if any rough edges are visible on the cleaner. This can cause damage to the pool.
- Cleaner filter cartridges or debris canister should be thoroughly cleaned after each use or as often as needed to ensure the cleaner's optimal performance.
- Never store the cleaner with dirty filter cartridges or debris canister.

OPERATING CONDITIONS

- Water temperature operation range: min 50°F / 10°C, max 95°F / 35°C. Maximum operating depth: 3 m (10 ft.)
- Operating the cleaner in temperatures above or below this range may affect performance, and cause premature wear or failure.
- Ambient air temperature: max 104°F / 40°C.
- To protect from permanent damage, if the cleaner is exposed to extremely hot ambient temperature, the power-supply will limit or suspend operation until its temperature is down to an acceptable operating level. To limit overheating and reduced performance, it is recommended to keep the control unit out of direct sunlight and keep the cooling fan unobstructed.

Unpacking and Cleaner Preparation



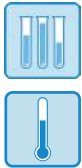
BOX CONTENTS

- Operation instructions and warranty pack with product information (serial and model number)
- Accessory pack
- Cleaner with cable
- Control unit

UNPACKING

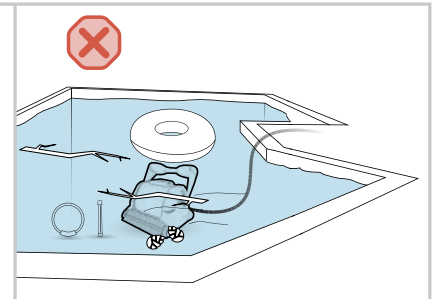
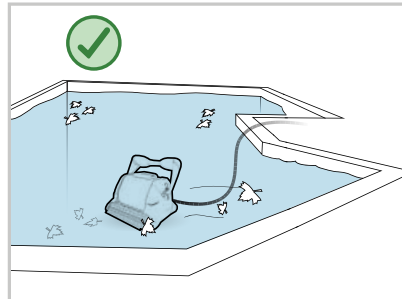
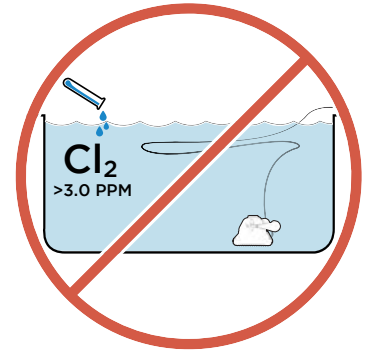
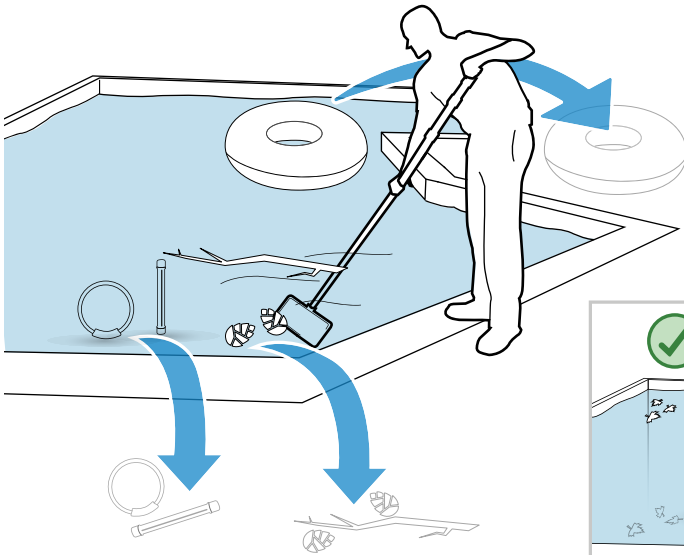
- Carefully remove the contents of the box from the top. Do not put the box on its side to remove content as some parts may fall out of the box and get damaged.
- Verify the contents of the box.
- Carefully read the operation instructions and warning document first.

Pool Preparation



pH: 7.2 - 7.8
Chlorine: 1.0-3.0 PPM
Total Alkalinity: 80 - 120 PPM

50° - 100°F
10° - 37°C



POOL PREPARATION

- **NEVER SWIM WITH THE CLEANER IN THE POOL.**
- Before using the cleaner, remove any items such as thermometers, toys and other accessories from the pool. Such items may cause damage to the cleaner or the pool. Large debris should also be removed manually from the pool before installing the cleaner.
- Chemical balance of water may affect cleaner performance, accelerate wear of certain parts, and may lead to more frequent maintenance.
- **DO NOT LEAVE THE CLEANER IN THE POOL WHEN CHEMICAL SHOCKING THE POOL.**
- pH should be adjusted and kept between 7.2 - 7.8.
- Total chlorine should be maintained between 1.0 - 3.0 PPM. The cleaner should never be used when chlorine level (or other oxidizer) exceeds the normal values.
- Total alkalinity level should always be maintained between 80 - 150 PPM.
- To keep the pool safe for swimming and protect your equipment, have the water tested frequently and balance chemicals accordingly.

CAUTION - RISK OF EQUIPMENT DAMAGE

The cleaner is not intended to clean the pool after extended periods of disuse until the following steps have been taken:

1. Clear the pool of any large objects that might interfere with the cleaner's operation.
2. Check to see that the water is at the recommended level.

3. Check the water chemistry. The water should be properly balanced (pH level), and the pool free from algae. Algae can adversely affect the operation and performance of the cleaner.
4. Clean or backwash the filtration system without the cleaner in the pool.

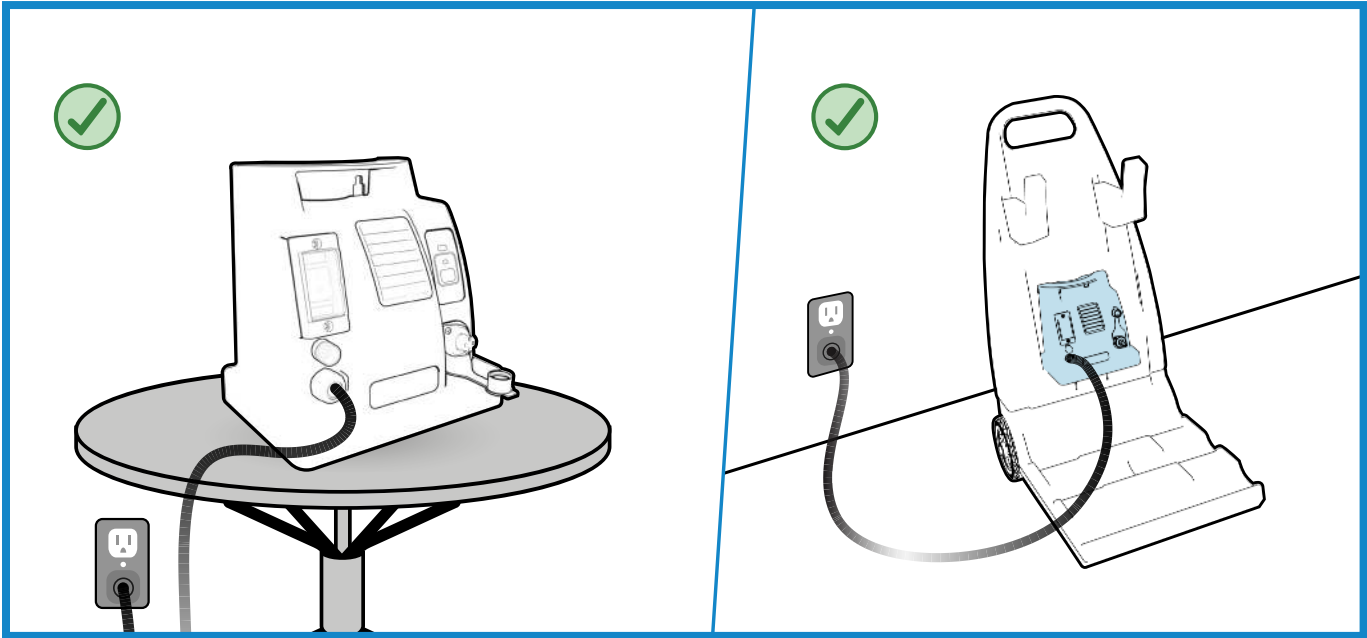
NEW POOL CONSTRUCTION

- The cleaner should not be used to remove plaster dust or construction debris from new or renovated pools.
- Brush the newly constructed pool surface and vacuum new surface debris before installing the cleaner.

POOLS WITH EXCESSIVE DEBRIS

- The cleaner should not be used to remove excessive debris before a seasonal pool opening or following a high wind event or sandstorm.
- Pools with excessive amounts of debris should be vacuumed manually before using the cleaner.
- Always empty the cleaner filter cartridges or debris canister when filled with debris.

Control Unit Set-Up



INSTALL

The Aquashark Control Unit can be installed and used in different locations:

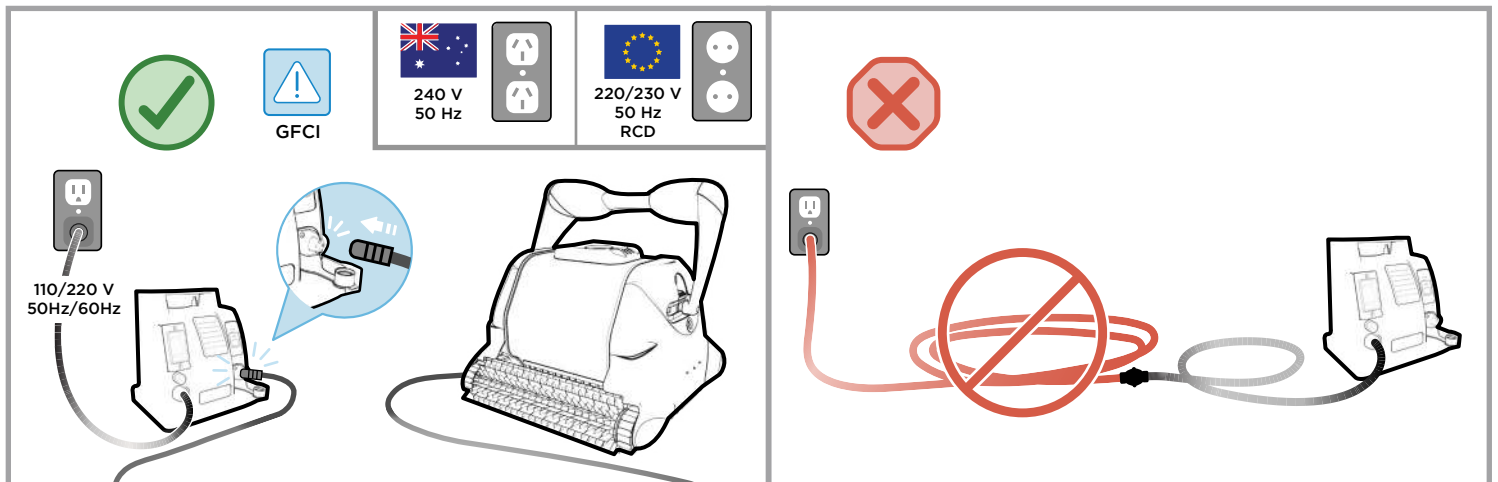
1. Sitting on a table or on the pool deck
2. Positioned on the caddy cart control unit cradle

To find the best location for your control unit, please consider the following:

- The control unit should preferably be kept in a shady area and the cooling fan kept unobstructed.
- Leaving the control unit on the pool deck is acceptable but precautions should be taken so it does not get damaged by regular traffic around the pool or by playing children or pets.

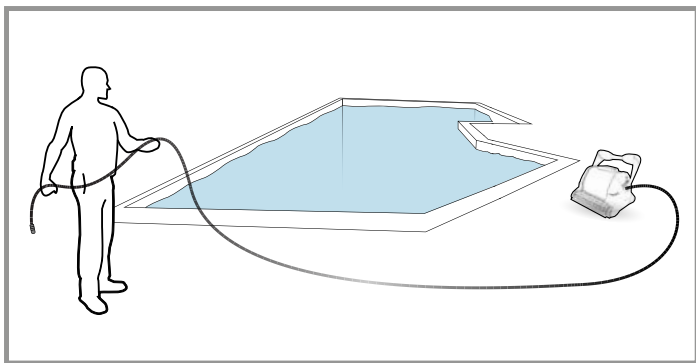
- The cleaner control unit should be located at least 3.5 m (11.5 ft.) from the closest edge to the pool.
- To reduce the risk of electric shock, **DO NOT USE AN EXTENSION CORD** to connect unit to electric supply.
- Based on your region of the world, the cleaner control unit must be connected only to a supply circuit protected by a ground-fault circuit-interrupter (GFCI) or a residual current device (RCD).

Cleaner Set-Up



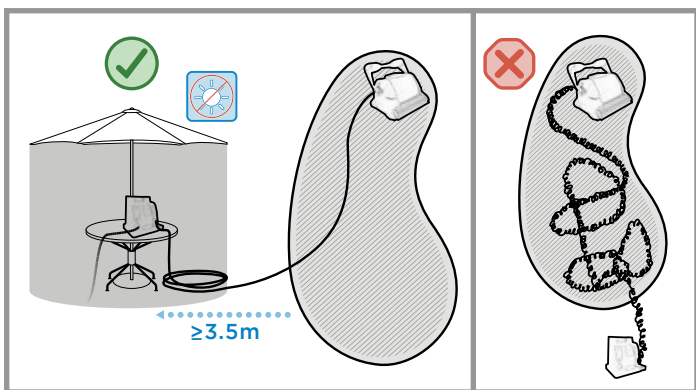
Connect the cleaner cable to the control unit and plug the control unit cord into a protected outlet.

To reduce the risk of electric shock, do NOT use an extension cord to connect unit to electric supply.



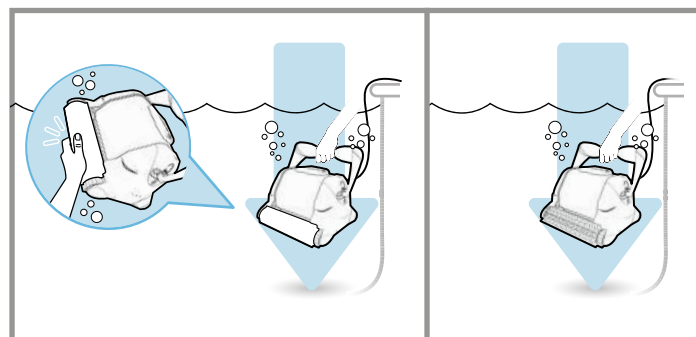
POWER CABLE

- To minimize cord twisting, completely unroll and straighten the cable before putting the cleaner in the pool.



CLEANER LOCATION

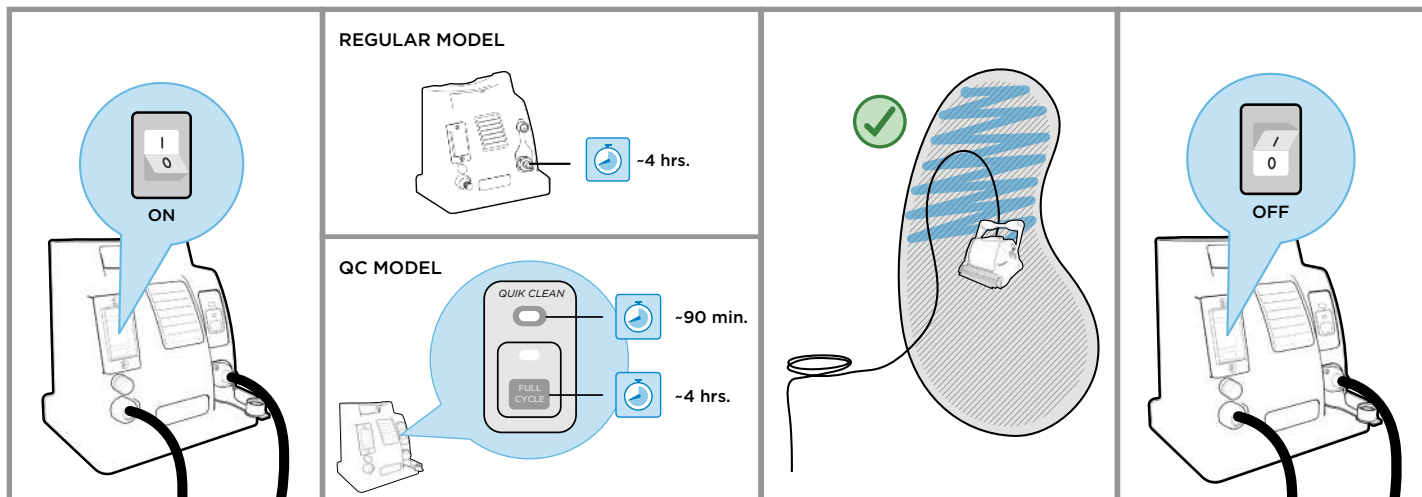
- It is ideal to have the control unit positioned near the midpoint of your pool (lengthwise).
- Depending on the size and shape of your pool, the entire length of the floating cable may not be necessary. The floating cable should reach from the cleaner control unit to the furthest point in the pool, plus the depth at the deep end of the pool. To reduce cable tangling, any excess cable should be coiled and placed next to the control unit.



Submerge the cleaner in the pool by gently rocking it back, forth and sideways to help the cleaner purge trapped air and sink to the pool bottom.

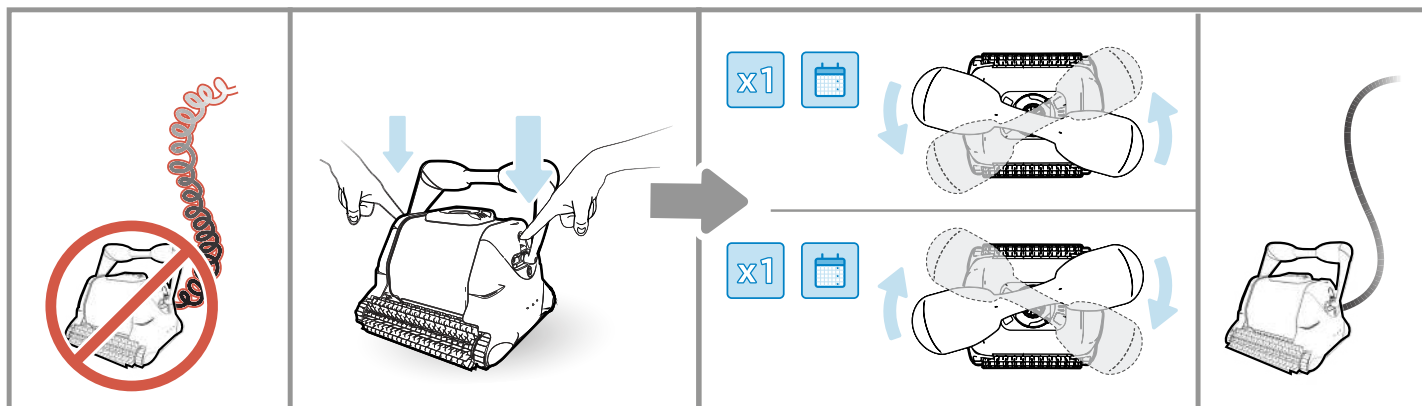
For units with foam rollers, squeeze the foam to allow the roller to get soaked.

STARTING THE CLEANER

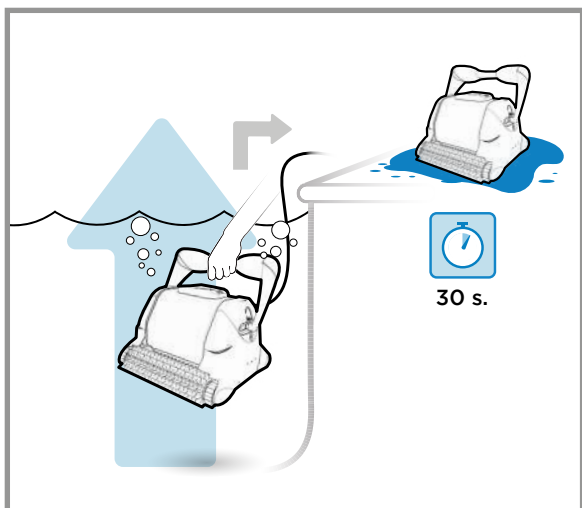


CLEANING CYCLE

- During its cleaning cycle the cleaner may not climb the wall or any vertical surfaces every time. It will adjust its cleaning sequence to offer optimal pool coverage.
- For a faster (90 minutes) cleaning of the main pool area, the Quick Clean mode can be selected (Available on Quick Clean model only).
- It is normal for the cleaner to operate in both forward and reverse directions.



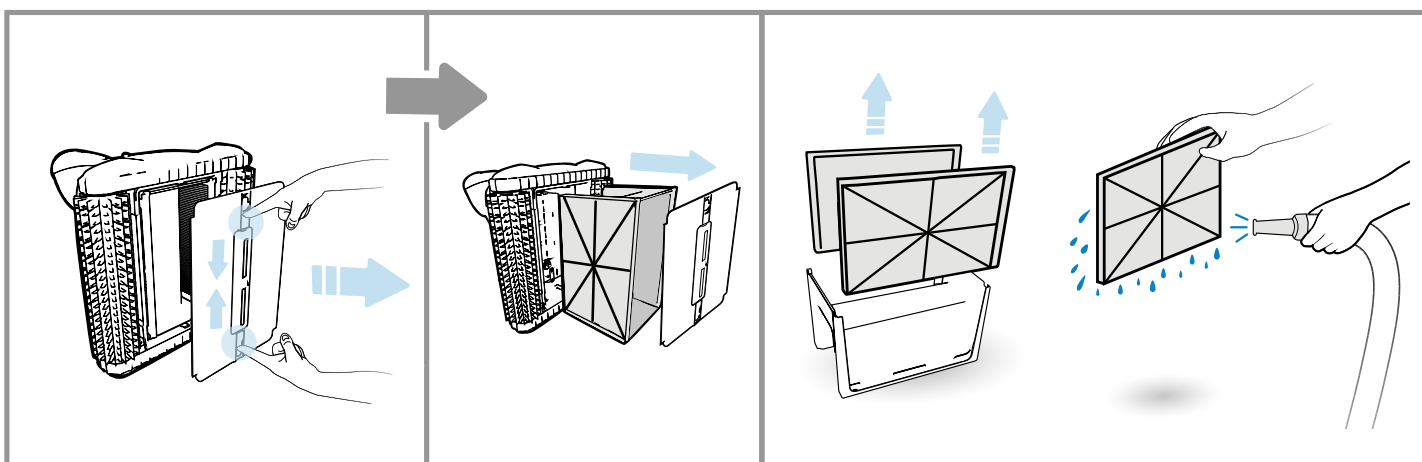
The Aquashark has an adjustable handle. The handle must be locked in a diagonal position in order to ensure optimal cleaning results. The handle has two diagonal positions. Reverse handle positions after each use to minimize cord twisting.



REMOVING THE CLEANER FROM THE POOL

When the cleaning cycle is completed and the cleaner is either in sleep mode (Start/Stop button light is solid blue) or in stand-by mode (Start/Stop button light is blinking green), The Aquashark Series can be easily removed from the pool by using the handle on the cleaner.

1. Remove the cleaner by pulling it out of the water using the handle on the cleaner.
2. Allow the cleaner to drain on the pool deck before removing the filter cartridge for cleaning.



CLEANING THE FILTER CARTRIDGE

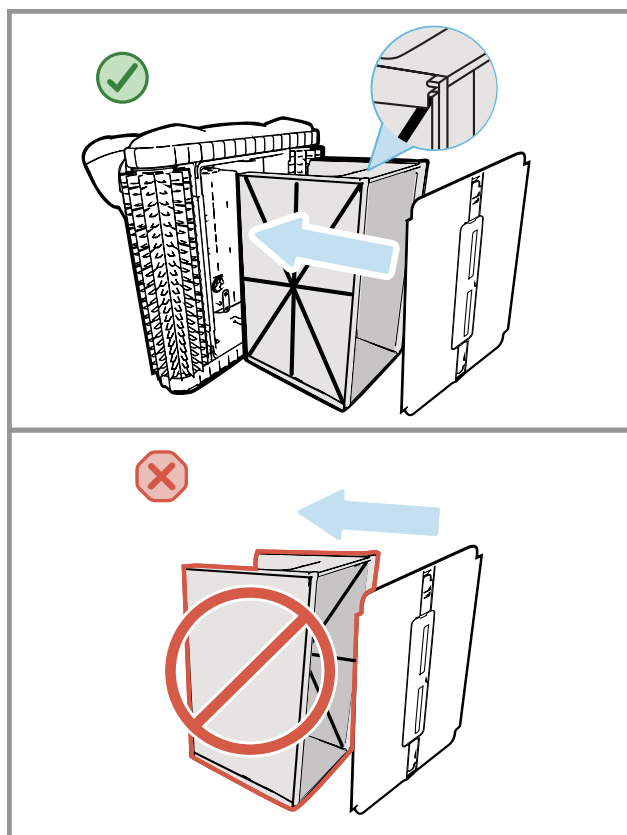
1. Place the Aquashark on its side.
2. Release the bottom lid latches and remove the bottom lid assembly.
3. Pull out the filter cartridge. Your cartridge is a three piece filter assembly that you may or may not remove the elements for thorough cleaning.
4. Using a garden hose with a spray nozzle, pressure-wash the filter elements to remove debris.
5. Wash the inside of the bottom lid.
6. Replace the filter cartridge into the Aquashark.
7. Install bottom lid and slide latches into lock position.

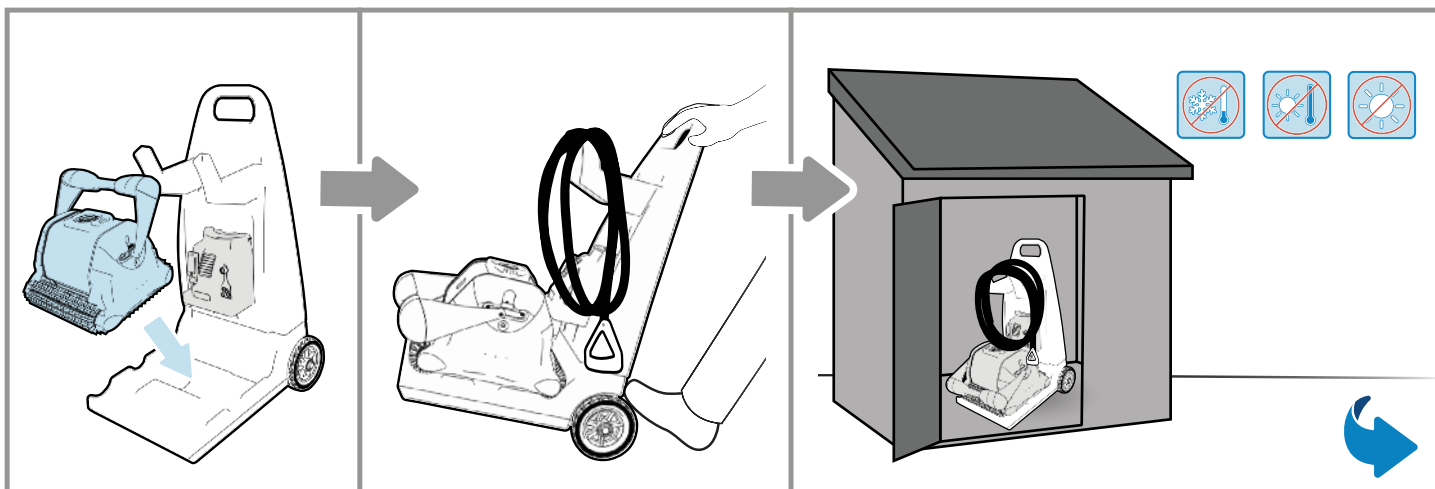
Filter cleaning solution can be used to remove D.E., excessive dirt and/or sand.

Remember: The cleaner your filter is, the more efficient your unit will perform.

CAUTION - RISK OF EQUIPMENT DAMAGE

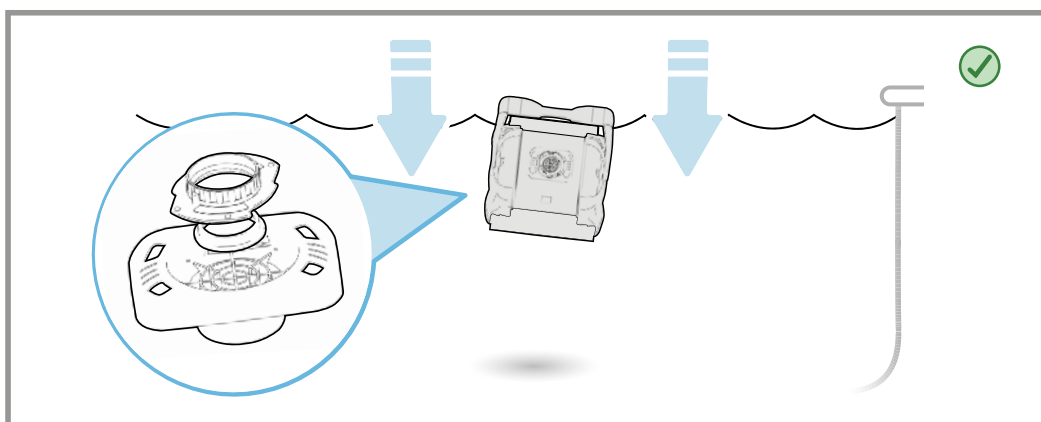
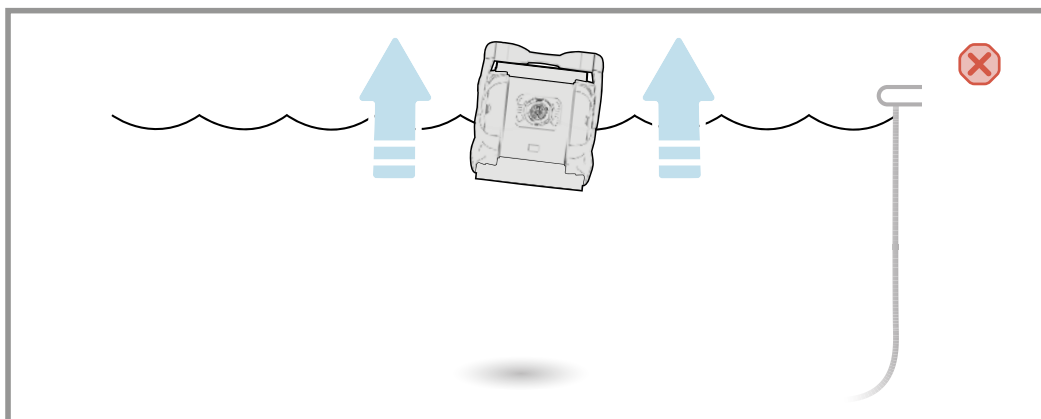
Operating the cleaner with a full filter will result in reduced performance, limited wall-climbing capability and limited debris pick-up. Empty and clean the filter, when needed, to maintain optimal performance. Heavier debris such as sand, pebbles and rocks may require more frequent cleaning, since they have a greater effect on the weight and buoyancy of the cleaner.





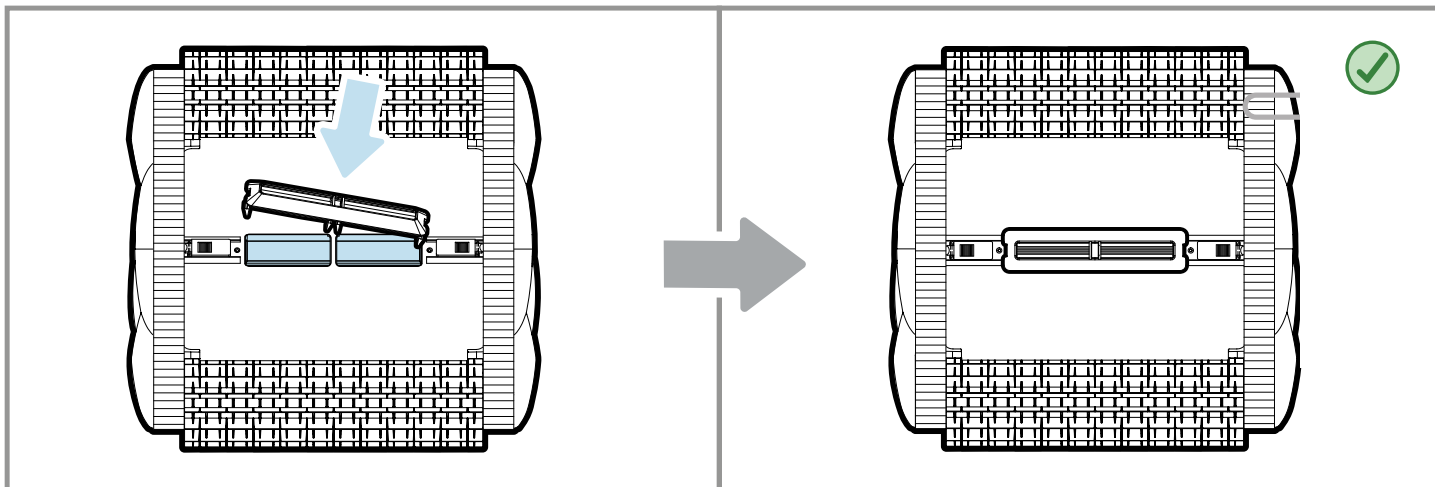
STORING THE CLEANER AND CADDY CART

- When not in the pool, keep the cleaner away from direct sunlight or store it in a protected area.
- For winter storage, store the cleaner in a place where it will be protected from cold temperatures.
- Drain the cleaner completely before storage and remove all remaining debris from the canister.



THE FLOW RESTRICTOR

If the cleaner is climbing too high on the wall, the flow restrictor may be installed to limit its climbing.



If Aquashark fails to pick up fine or heavy debris:

- Clean the filter. It may be clogged.
- Clip the high velocity inlet to the bottom lid. This inlet creates extra suction for lifting fine or heavy debris. This part also can be helpful if unit becomes routinely stuck on a raised main drain.

Electric codes
Codes électriques
Códigos eléctricos
Codici elettrici
Vorschriften für die Elektroinstallation
Elektrische codes
Códigos elétricos
Электрические коды

US: National Electric Code (NEC)
CAN: Canadian Electric Code (CEC)
AUS-NZ: AZ/NZS 3000
EU-UK

F	NF EN C 15-100	GB	BS7671:1992
D	DIN VDE 0100-702	EW	EVHS-HD 384-7-702
A	ÖVE 8001-4-702	H	MSZ 2364-702:1994 / MSZ 10-533 1/1990
E	UNE 20460-7-702 1993, REBT ITC-BT-31 2002	M	MSA HD 384-7-702.S2
IRL	Wiring Rules + IS HD 384-7-702	PL	PN-IEC 60364-7-702:1999
I	CEI 64-8/7	CZ	CSN 33 2000 7-702
LUX	384-7.702 S2	SK	STN 33 2000-7-702
NL	NEN 1010-7-702	SLO	SIST HD 384-7-702.S2
P	RSIUEE	TR	TS IEC 60364-7-702

Use Only Genuine Hayward Replacement Parts
 N'utilisez que des pièces détachées d'origine Hayward
 Utilice únicamente piezas de repuesto originales de Hayward
 Utilizzare esclusivamente pezzi di ricambio originali Hayward
 Verwenden Sie nur Original-Ersatzteile von Hayward
 Gebruik uitsluitend originele Hayward-onderdelen
 Utilize apenas peças sobresselentes de origem Hayward
 Используйте только оригинальные запчасти компании «Hayward»

Hayward Pool Products

620 Division Street
Elizabeth, NJ 07207

www.hayward.com

Hayward Pool Products Canada

2880 Plymouth Drive
Oakville, ON L6H 5R4

www.haywardpool.ca

Hayward Pool Europe

1070 Allée des Chênes
01150 St-Vulbas, France

www.hayward.fr

Hayward Pool Products (Australia) Pty Ltd.

Melbourne-Sydney-Brisbane-Perth
P.O Box 4384, Dandenong South VIC. 3164

www.hayward-pool.com.au

