



priceless pool protection



In-pool / above-pool

Installation manual



priceless pool protection

IN-POOL & ABOVE-POOL / INSTALLATION MANUAL



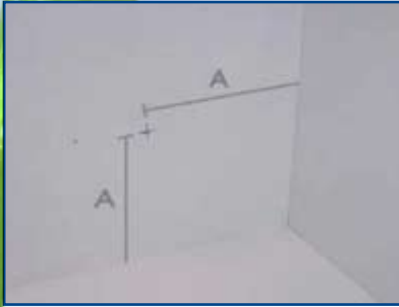
Never expose the slats to the sun unless they are lying on the surface of the water!

CONTENTS

In-pool	04
Fitting the wall duct	05
Fitting the bearing block	06
Fitting the drive shaft	08
Fitting the winding tube	09
Grouting the wall duct	10
Fitting the drive motor	11
Above-pool	12
Placing slats	14
Connection diagram external motor - Aqua ECB	15
Connection diagram key switch	16
Diameter slat roll and niche dimensions	17
Installation guide rollers	18
Universal wiring diagram	19
Operating and maintenance instructions	20

IN-POOL

Before you begin the installation, it is recommended that you check to make sure you have received all the parts. If parts are missing, contact the supplier.



Use the matrix to determine the diameter of the slat roll. Now use the formula on page 17 to determine dimension A.



Drill the recess. Recess diameter:
Up to 15-metre length $\text{Ø}60$ mm
Up to 30-metre length $\text{Ø}70$ mm



Drill a $\text{Ø}12$ mm pouring channel in the motor well at a 45° angle starting approximately 7 cm above the recess, through which the resin can be poured.

FITTING THE WALL DUCT



Check the dimensions.



Fit the gasket.



Apply sealant to gasket.



Insert.



Fit gasket with sealant in motor well.



Fit compression ring.



Fit check nut (hand tight).

FITTING THE BEARING BLOCK



Mark the dimensions of the wall duct.



Mark one drill hole.



Drill first hole with $\text{\O}11$ mm drill. At least 80 mm deep.



Insert plug, place bearing block and mark remaining holes.



Remove bearing block and drill remaining holes.



Place plugs on tap bolts and tighten to expansion slug.



TIP! Applying a bit of grease prevents filling with dust.



Apply sealant.



Fit bearing block.



Use a punch to drive tap bolts completely into the hole.



Tighten bolts securely.



FITTING THE DRIVE SHAFT



Remove liner flange.



Place water seal with open side towards the pool.



Place water seal on the well side with open side towards the pool.



Apply grease in the bronze bushings.



Fit liner flange.



Fit the drive shaft.

FITTING THE WINDING TUBE



Slide tube into bearing block.



Slide drive shaft into coupling bush of tube.



Determine length of spacer bush and cut to length.



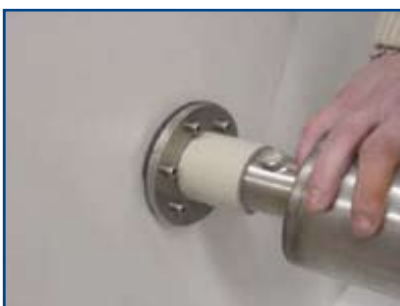
Slide out drive shaft, fit spacer bush in between and secure with M10 bolt.



TIP! Use drilled hole at keyway to move shaft.



Tighten check nut.



Make sure the tube turns smoothly.



Attach the straps to the winding tube.

TIP!

Attach the first two slats to the straps so they will float to the top. There must, of course, be water in the pool (pools with liner), so the slats are cooled sufficiently. This prevents deformation of the slats.

GROUTING THE WALL DUCT

Only grout duct after ensuring that the winding tube turns smoothly and without resistance in the bearing block and wall duct.



Add hardener to resin and mix well.



Fully insert funnel pouring hose into pouring channel.



Slowly pour resin into funnel.

TIP! Rather than pouring the resin continuously, pause occasionally to allow air to escape from pouring channel.

FITTING THE DRIVE MOTOR



Fit motor bracket on motor.



Mark drill holes.



Drill Ø11 mm holes, at least 80 mm deep.



Screw tap bolt + plug together on motor bracket and apply grease in the motor bush.



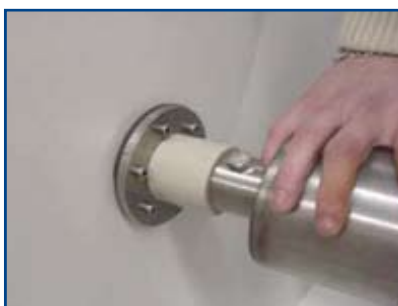
Slide plugs into drill holes and drive in with a bench hammer until bolt head touches bracket.



Place motor flush against threaded end to prevent movement of seal and then secure motor bracket on wall side and motor side.



Grease the key.



Turn winding tube until key can be inserted.

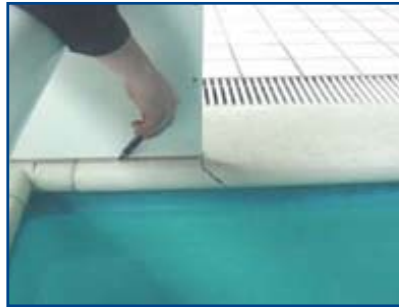
ABOVE-POOL

CHECK PARTS

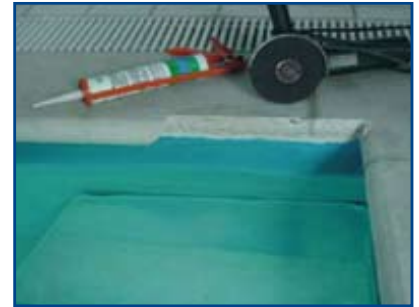
Before you begin the installation, it is recommended that you check to make sure you have received all the parts. If parts are missing, contact the supplier.



Place the construction such that the back side of the winding tube is equal with the swimming pool wall.



Mark the piece of the coping that is to be removed; the mark on the front side should taper away at a 30° angle.



The depth of the notch should be even with the surface of the pool wall.



Put the construction in place again and secure it with the supplied bolts and plugs.



Apply grease to the motor bush.



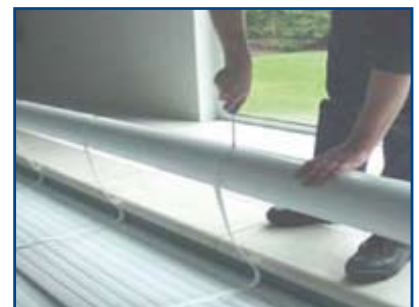
Fit drive motor and check that the tube turns smoothly.



Mount the drive motor using the motor bracket.



Slide the first slat through the straps with the spring towards the tube.



Fit the straps to the winding tube.



Ensure that the straps hang plumb beneath the tube.



Connect the second slat.



Fit the rest of the slats so the pool is completely covered (leave off any extras).



Make the electrical connections as shown in the wiring diagram on page 16.



Grease key and fit in the drive motor.



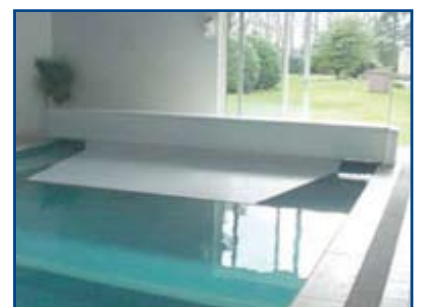
Fit the top cap over the construction.



Fit the top cap and the side cover at the same time (drill to 4 mm and tap with M5).



Fit the snap caps.



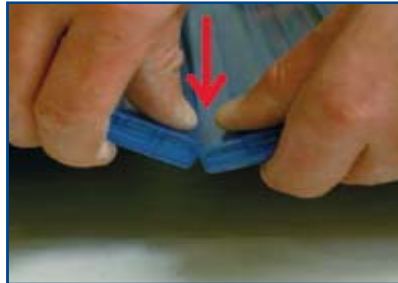
Start/end adjustment (see manual for control box).

FITTING SLATS

ATTACHING SLATS



Place the lower hook in the lower groove.



Click the upper hook in the upper groove.

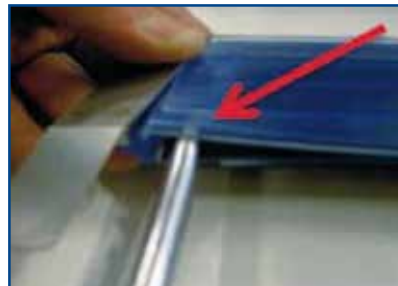


Flex the slats up and down so they click further in each other.

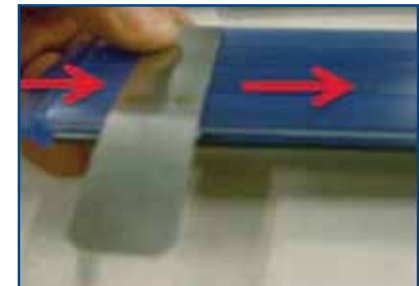
FITTING DIRECTIONAL GUIDE BRACKET



Place the end of the bracket 3 mm into the slat (the bracket is attached to the second slat from the end).



Open the groove of the slat with a screwdriver and slide the bracket over the slat.



Slide the bracket further over the slat (the same applies to brackets for above-pool installations, but then with the brackets on the underside of the slat).

DETACHING SLATS



Remove the upper hook from the upper groove.



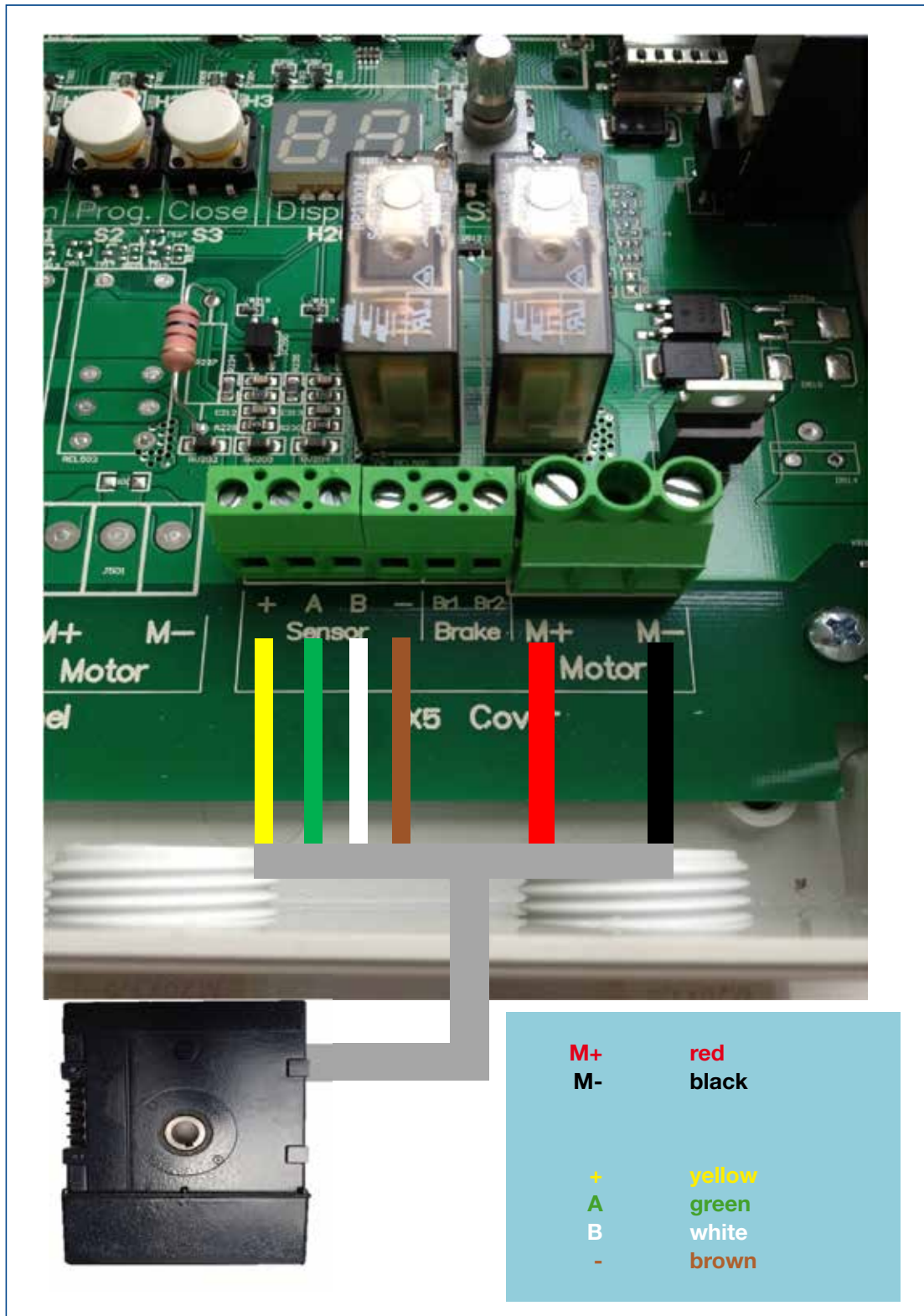
Place a thin, flat screwdriver between the hook and the groove and slide it toward the other end of the slat so the hook comes loose from the groove.



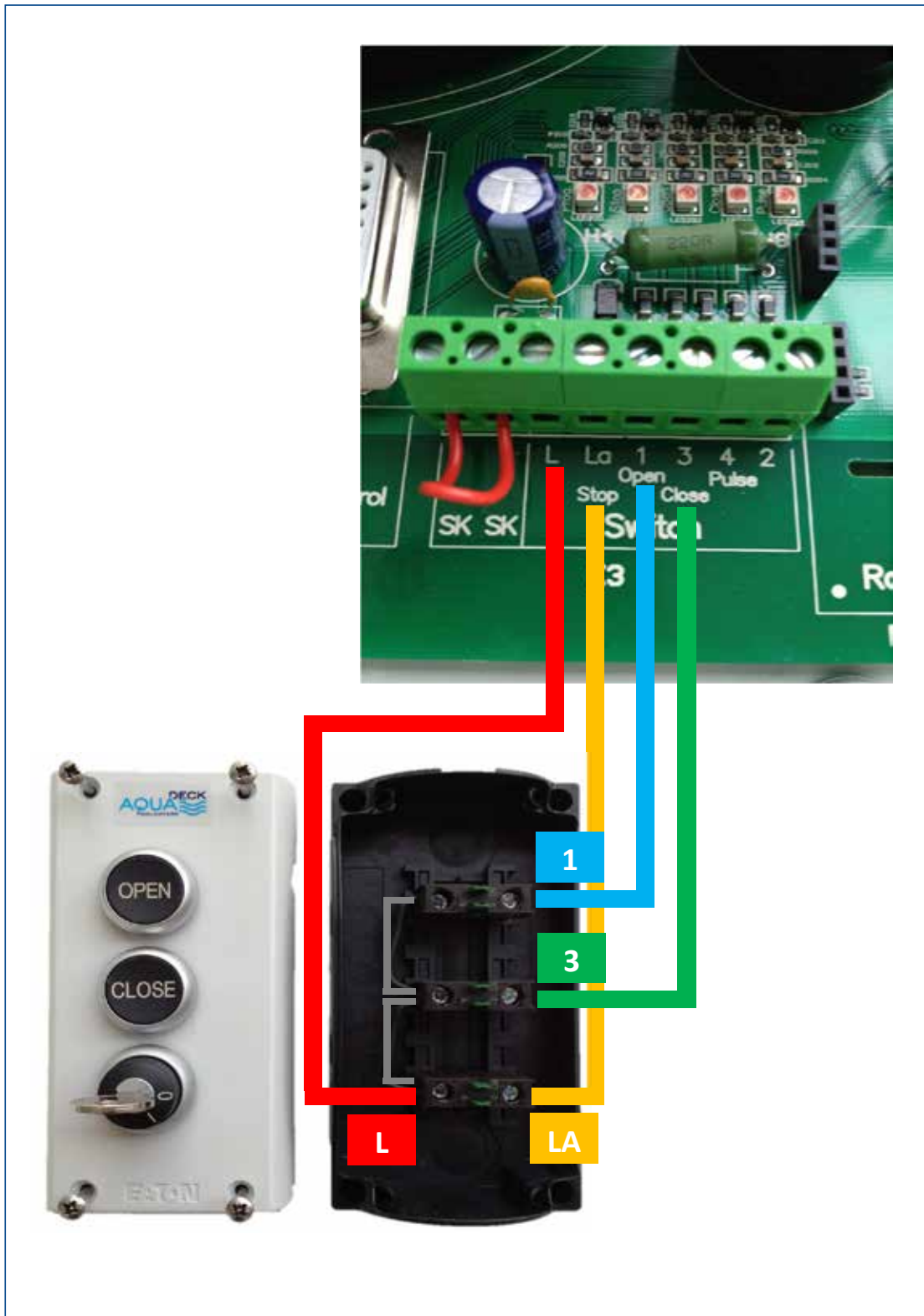
Remove the lower hook from the lower groove and pull the slats apart.

Condensation may collect inside the transparent and solar slats.

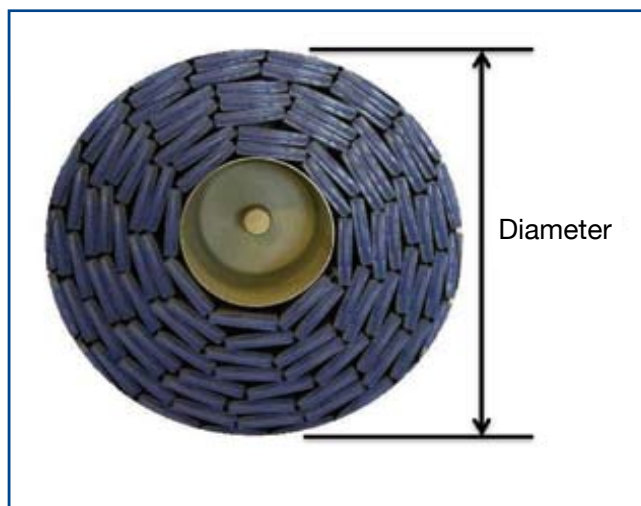
CONNECTION DIAGRAM EXTERNAL MOTOR - AQUA ECB



CONNECTION DIAGRAM KEY SWITCH

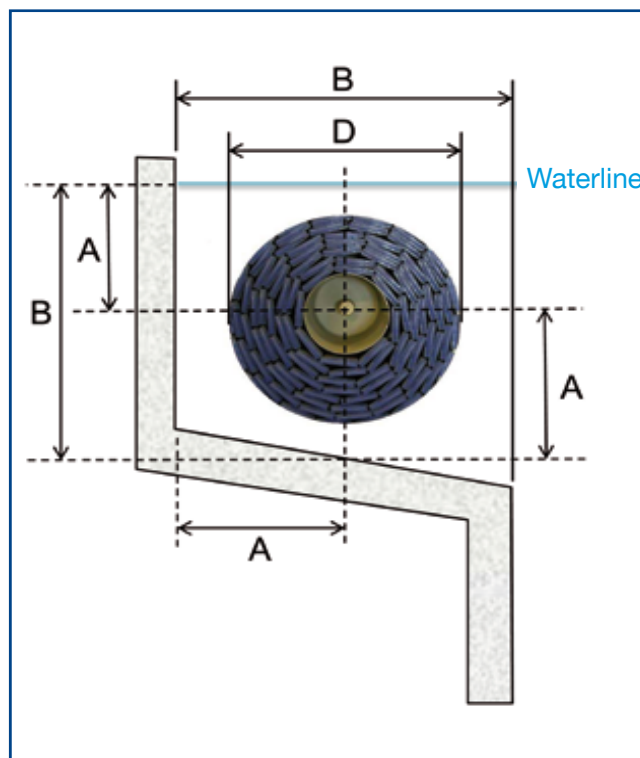


DIAMETER SLAT ROLL



LENGTH OF POOL IN METRES	DIAMETER IN MM
5	Ø 373
6	Ø 407
7	Ø 434
8	Ø 476
9	Ø 494
10	Ø 510
11	Ø 520
12	Ø 548
13	Ø 568
14	Ø 584
15	Ø 600
16	Ø 615

DIMENSIONS IN-POOL NICHE



D	A	B
400	250	500
450	275	550
500	300	600
550	325	650
600	350	700
650	375	750

INSTALLATION GUIDE ROLLERS



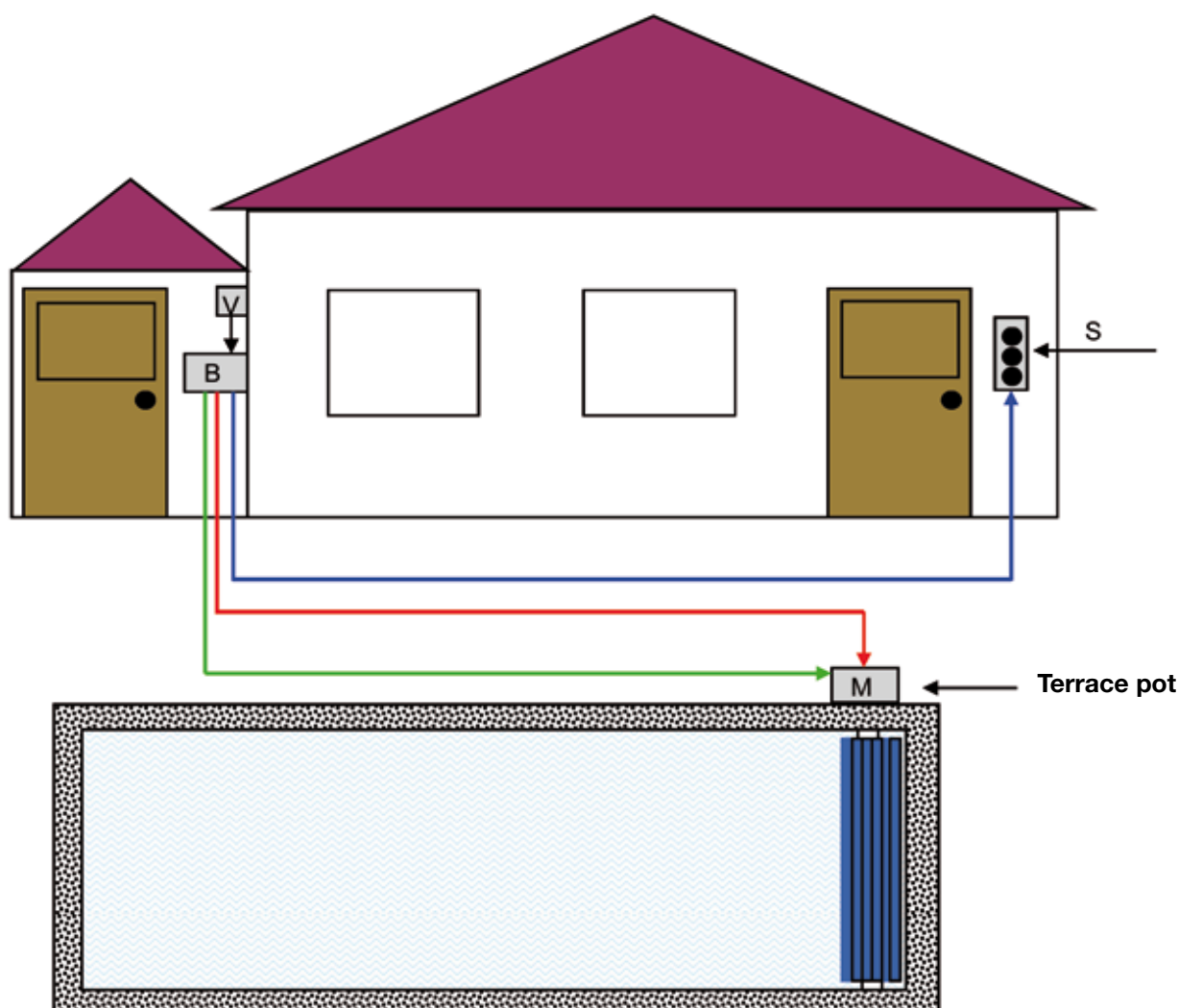
Always place the guide rollers between two straps to prevent snagging or damage of the straps.

Do not allow the guide rollers to extend too far at the front (max. 2-3 mm), otherwise the slats may jam when rolling them up.

Recommended number of guide rollers:

- Every 600 mm.
- Between each pair of straps (e.g. 7 straps = 6 guide rollers).

UNIVERSAL WIRING DIAGRAM



- S = Key switch —————→ 4 x 0.75 mm² for length < 50 mtr
- M = Motor 24 V —————→ 2 x 2.5 mm² for length < 25 mtr
- M = Motor end contact —————→ 6 x 1.00 mm² for length < 25 mtr
- B = Control box 24 V
- V = Power supply 220 V

The wiring diagram above is suitable for: Tube motor, Aqua Mat 120, 250 and JR.

- > Before you begin making the electrical connections, it is recommended that you read all the information thoroughly so you will not be surprised later (e.g. cable selection).
- > Always use a terrace pot with a resin-filled junction box inside.
- > Place the control box in a dry, dust-free area.
- > Ensure that a person standing at the key switch has a good view of the water surface so he or she can respond immediately if a problem occurs.

OPERATING AND MAINTENANCE INSTRUCTIONS

CAUTION!
Keep the pump running during sunlight hours. Otherwise too much heat will build up in the slats.

It is recommended that you carefully read the following operating and maintenance instructions for your Aquadeck slatted cover.

OPERATION

Make sure you always have a complete overview of the swimming pool during operation (consider this carefully when using a remote control). Before opening or closing, make sure there are no obstacles present that could block the operation of the cover, such as lawn chairs, an automatic vacuum cleaner hose or pool toys. In an emergency, you can stop the cover with the key switch.

ATTENTION! EXTREMELY IMPORTANT!

The Solar and transparent covers not only retain the heat in the pool but also convert solar energy to heat through the special design of the cover slats. This heat is transferred to the pool as the water circulates. If the Solar or transparent slatted cover is not lying on the water, it must be protected from sunlight; otherwise the heat may cause the slats to deform.

SAFETY

You can prevent operation by turning the key switch to the O-position and removing the key so unauthorized persons cannot operate the cover. To create a safer environment, it is recommended that you install grip rails. This will prevent entry at the location in question.

INSTRUCTIONS FOR WINTER STORAGE OF SLATTED COVER

Above-pool: Roll up the slatted cover under the protective cover. Make sure the slatted cover is clean and that all leaves and contaminants have been removed. Install a winter pool cover.

In-pool: If the filter will continue to run, leave the slats on the water. Make sure the slatted cover is clean and that all leaves and contaminants have been removed. Then install a 'solid' winter pool cover. Do not use a net-type cover. This type allows sunlight to pass through, which will promote the growth of algae inside the slats during the winter.

If the water level is reduced, the filter is protected against freezing. Follow the instructions given above. Remove motors fitted in a motor well and store them in a frost-free location.

With a slat roll niche behind the pool: The slat roll niche must be either completely filled with water or completely empty. It must never be half-filled. This results in damage at the frost line. Switch off the power supply to the control box.

CAUTION!
 Keep the pump running during sunlight hours. Otherwise too much heat will build up in the slats.

ATTENTION

Do not replace or move slats at low temperatures.

STORAGE OF THE SOLAR / TRANSPARENT COVER

The cover may only be stored in areas that are not exposed to sunlight.

FITTING THE SOLAR / TRANSPARENT COVER

The cover must be placed on the water during a period of cloudy weather in the evening hours. If this is not possible, the cover must be brought from an area protected from sunlight and placed immediately on the water. In this case it is important that the slats do not sit in the sun for any length of time before they are placed on the water, otherwise they will become deformed.

IF THE SOLAR / TRANSPARENT COVER IS LYING ON THE WATER

The water circulation (filter system) must be switched on all day long, otherwise heat will accumulate under the cover, causing the slats to age more quickly and possibly become deformed.

ATTENTION Ensure that pumps with variable frequency drive have sufficient capacity to maintain water circulation under the cover so the slats are cooled sufficiently. This prevents deformation of the slats.

THE WATER LEVEL UNDER THE SOLAR / TRANSPARENT COVER

If the pool is equipped with a safety provision (hand rail, etc.), the pool must remain full at all times. If the water level becomes too low, the cover will hang on the safety provision along both sides and sag in the middle. The ends of the slats that are no longer cooled by the water will heat up, which can lead to permanent deformation. This also applies to pools with slanted walls.

CAUTION!
Keep the pump
running during
sunlight hours.
Otherwise too much
heat will build up in
the slats.

IF THE SOLAR / TRANSPARENT COVER IS ROLLED UP

'Above-pool' covers are rolled up above the water level, preventing the slatted cover from coming into contact with the water. For this reason, the winding system must be enclosed on three sides. If no protective cap has been ordered, you must build an enclosure before installation of the slatted cover. The enclosure must not allow any sunlight or heat through, and it must not be in direct contact with the slatted cover because this will result in the transfer of heat from the enclosure to the slatted cover. This would result in the accumulation of heat and deformation of the slats.

CLEANING OF THE SLATS

The cover must be cleaned. This must be done on a cloudy day, in the early morning hours or after sunset. Due to evaporation of the water on the slats, mineral build-up may develop on the top surface of the slats. This can be easily removed with Aquadeck slat cleaner. **Recommendation:** at least 2x per season.

In an area with many trees, algae may develop in the links of the cover. This can be removed with hypochlorite (liquid chlorine). Thin this with water to a 50% solution and pour it over the entire cover with a watering can. This will cause the algae to burn inside the links.

EMPTYING THE POOL WITH SOLAR / TRANSPARENT COVER

If the pool is emptied, rolled-up covers must be protected from the sun. In this case it is recommended that a sun- and heat-resistant film be erected on a frame placed over the winding system. This prevents the film from coming in direct contact with the slatted cover and prevents a build up of heat.

FINAL REMARK

We accept no liability for damage that results from improper handling of the cover.



home enjoyment

with an eye for safety

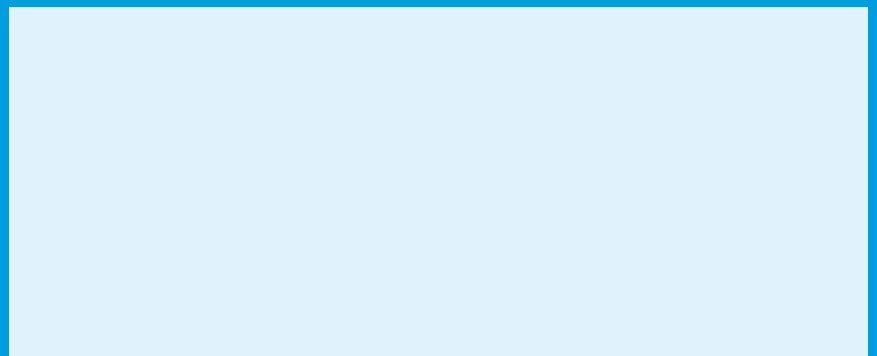
Aquadeck® offers undisputed quality in pool covers and is located in Budel, The Netherlands. Professionalism, all-round hospitality, the guarantee of top quality and support are key values that are consistently lived up to and delivered. Aquadeck® supplies its products to a carefully selected dealer network in Europe.



priceless pool protection



Your dealer:



De la Minestraat 2
6021 PJ Budel
The Netherlands
T +31 (0)495 430 317
F +31 (0)495 495 555
info@aquadeck.nl

www.aquadeck.eu

Made in Holland

A MEMBER OF  Pollet Pool Group